



theshire

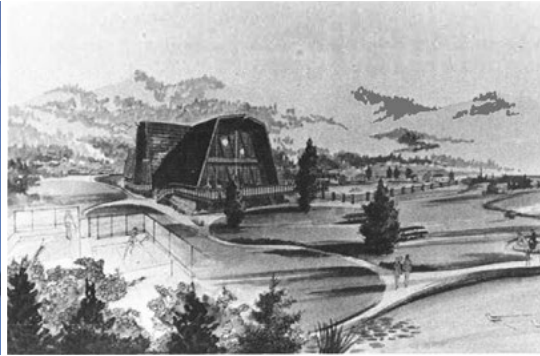
MAY2017

GLENSHIRE DEVONSHIRE RESIDENTS ASSOCIATION MAGAZINE

MAY 2017



12



13



18

FEATURES

12 TREES, BRANCHES, AND POWER LINES — A BAD COMBINATION

If you know of a tree that you believe could fall on one of Liberty Utilities' power lines, they want to know about it!

13 A LITTLE GLENSHIRE HISTORY

Check out the "Club Innisfree Newsletter" from June of 1971.

14 UNDERSTANDING DARK SKY EXTERIOR LIGHTING

Studies show that bright lights do not increase safety but can actually threaten security.

18 TRUCKEE DAY

Join your friends & neighbors for this town-wide street clean up and block party!

DEPARTMENTS

03 NOTE FROM YOUR BOARD OF DIRECTORS Survey information

04 NOTE FROM YOUR GENERAL MANAGER Spring cleaning

05 SIMPLY GREEN The great pine needle debate

06 GDRA Board Candidates wanted, Pool jobs available | 6 Vehicle donation | 10

09 WILDLIFE & CRITTERS Owls in the Shire

11 PERSPECTIVE Funny bone fix

16 BULLETIN BOARD Announcements, messages, notifications

19 TRUCKEE POLICE & FIRE DEPARTMENT Wildfire is coming. Are you ready?



NOTE FROM YOUR BOARD OF DIRECTORS

Survey Information from your Board

In the last Shire, the Board put out an overview of the community survey done last summer. Out of that survey, we found three areas that we wanted to address:

1. Communication and outreach to GDRA members
2. Compliance with CC&R's
3. GDRA budget and finances

In this article, we will begin with communication and outreach to members.

When reading the survey, most members answering the survey were satisfied to very satisfied that GDRA is accomplishing the goal of protecting and enhancing the quality of life and property in Glenshire. This goal encompasses helping to keep Glenshire safe, keeping property values up, providing amenities that people can enjoy within budget, and helping to bring the community together in a variety of ways.

The first part of the goal, keeping Glenshire safe, will focus on fire safety as discussed in our last Shire. This spring, GDRA will be launching a program of fire safety, focusing on commending those who have

conducted fire safety activities around their respective properties, and encouraging/educating those who may not be aware of fire safe activities.

Providing amenities for members/guests to enjoy, and having community gatherings are also part of communication and outreach. We have a beautiful pool now and without doing this work, we would have had to close down the pool, as it was falling apart. Many realtors have commented that having this amenity does keep property values up. Even if there are some that never use the pool, please be assured that if and when you decide to sell your property, this plays a part in keeping your property value up.

The following are activities provided and paid for by GDRA:

Glenshire Day which includes GDRA information, Town entity information and a free BBQ for families. Participation from the community is declining, and the cost of putting this on is about \$4000. We would like to hear from members about what events are of particular importance to Glenshire and how to decrease costs.

continued on page 8

SAVE THE DATE

SATURDAY, MAY 27
POOL OPENS WEEKENDS (TENTATIVE)

SATURDAY, JUNE 3
TRUCKEE DAY

SATURDAY, JUNE 10
ANNUAL DUMPSTER DAY
NO HAZARDOUS MATERIALS OR YARD WASTE
LIKE PINE NEEDLES, BRUSH, BRANCHES ETC.

SAT & SUN, JUNE 3-4
GLENSHIRE YARD SALE
WEEKEND

SATURDAY, JUNE 24
POOL OPENS DAILY (TENTATIVE)

FRIDAY, JULY 7
APPLICATION FOR
GDRA BOARD OF DIRECTORS
ELECTION DUE

MONDAY, SEPTEMBER 2
ANNUAL MEETING, 11:30AM
APPOINTMENT OF BOARD OFFICERS

MONDAY, SEPTEMBER 4
LAST DAY OF POOL OPERATION



The Shire is the official
publication of the
Glenshire/Devonshire
Residents Association
published by CCMedia

CCMedia

Truckee • Reno • Las Vegas

P | 530.582.4100

F | 530.582.4414

laura@ccmedia.net | www.ccmmedia.net

BOARD MEMBERS

Pam Stock, President

Jamie Brimer, Vice President

Sally Lyon, Treasurer

Marty Frantz, Secretary

Mike Canney, Member at Large

DESIGN REVIEW COMMITTEE

Ron Boehm

Darby Brookman

Brian McEneaney

GDRA STAFF

Dan Warren, General Manager

Lori Kelley, Administrative Assistant

CLUBHOUSE OFFICE

15726 Glenshire Drive

Truckee, CA 96161

P | 530.587.6202

F | 530.587.7045

Office Hours generally from

8am-5pm Monday - Friday

Please call ahead in case we are out meeting
with someone from the neighborhood.

CONTACT US

Main Office: 530.587.6202

email: glenshire1@sbcglobal.net

www.glenshiredevonshire.com

BOARD OF DIRECTORS MEETING SCHEDULE

6pm at the Glenshire Clubhouse
15726 Glenshire Drive

May 10, 2017

June 14, 2017

July 12, 2017

August 9, 2017

September 2, 2017
11:30am

October 11, 2017

DESIGN REVIEW COMMITTEE MEETINGS

Design Review Committee (DRC) meets
the 2nd and 4th Tuesdays of the month
at 7am. DRC meetings will be canceled
if no items are on the agenda 10 days in
advance of the meeting.

NOTE FROM YOUR GENERAL MANAGER Dan Warren



Happy curb appeal



Not so happy curb appeal

Spring Cleaning

As I write this the spring thaw is revealing what has been hidden under this winter's snows and is showing the destructive power the snow can possess. The Association is encouraging owners to take the time to attend to repairs and clean up their yards. This is a great opportunity to clean up or make those repairs that you have put off in the past, evaluate the removal of excess "stuff" stored outdoors and take

advantage of our annual "Dumpster Day" scheduled for Saturday June 10th from 7am to 1pm or when the dumpsters fill up (whatever occurs first).

Another vital issue is that with all of the downed trees and branches there is an immediate concern of increase wildfire issues. Down branches and trees also bring a new threat of increased beetle infestations spreading from the still green but broken off branches to live

trees. Owners should be diligent this spring and clean up any and all downed vegetation.

GDRA staff has met with local agencies and has been lobbying for programs to help owners more easily remove forest debris from their properties. When programs are finalized we will update our Facebook page, website and send out an e-mail to those on our e-mail list.

Another great thing about this time of year is that applications for the GDRA board of directors are available. Don't like the way things are going in Glenshire? Want to direct staff to focus on other areas? Love it here, but have great ideas that you would like moved forward? Remember that the board directs the General Manager and staff and a board member represents you and what makes Glenshire a great place to live.



SOROPTIMIST
Best for Women

Sip. Savor. Smile.

**43RD SOROPTIMIST WINE +
RESTAURANT FAIRE FUND-RAISER**
SATURDAY JUNE 3, 2017 | 5:00 TO 7:30 P.M.
COYOTE MOON GOLF COURSE
10685 NORTHWOODS BLVD. | TRUCKEE

**SILENT AUCTION WITH ITEMS
WORTH THOUSANDS
RAFFLE WITH 3 MAJOR PRIZES: \$25**

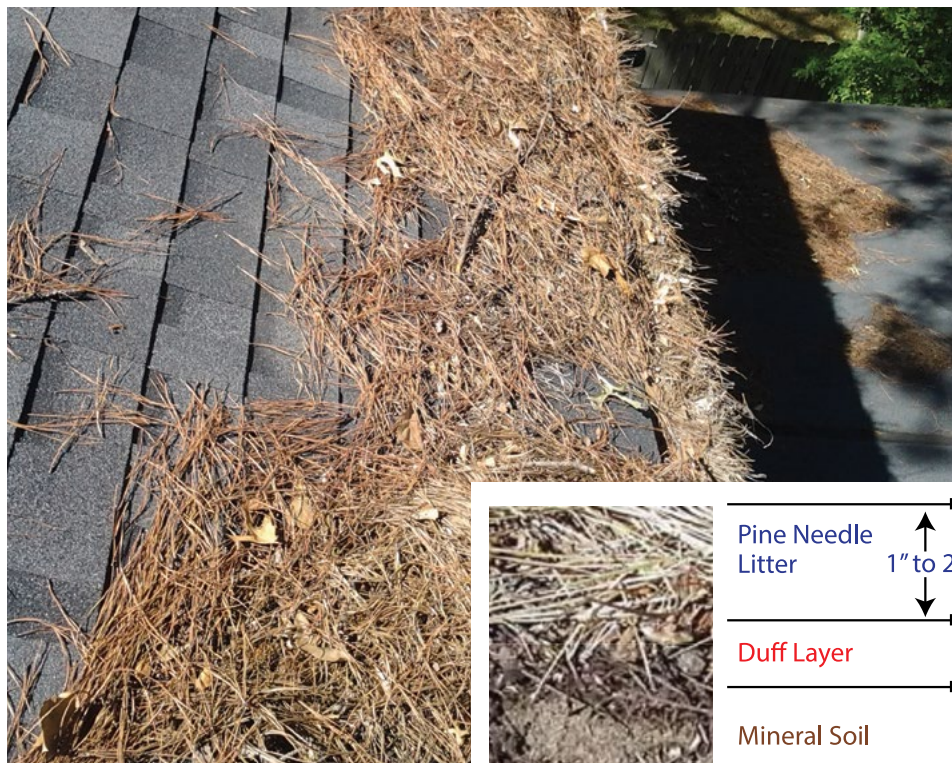
\$1000 MOUNTAIN HOME CENTER GIFT CERTIFICATE
\$869 SQUAW VALLEY ALPINE MEADOWS UNLIMITED SKI PASS
\$500 TOTAL WINE & MORE WINE TASTING FOR 20

Wine + Beer Tasting | Souvenir Wine Glass | Music by Tahoe Music
Culinary Delights Prepared by Area Restaurants + Caterers

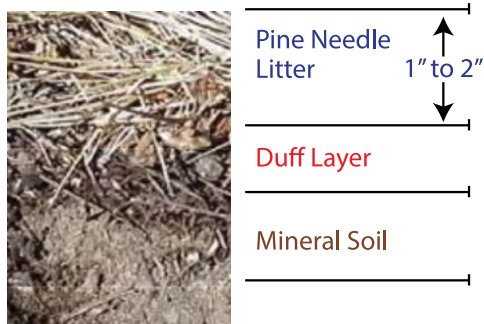
\$50 ADVANCE | \$55 AT DOOR | PURCHASE TICKETS AT:
DICKSON REALTY | TRUCKEE CHAMBER OF COMMERCE | TRUCKEE PHYSICAL THERAPY
AT THE DOOR OR ONLINE AT SITRUCKEEDONNER.ORG

Information: Contact Laura Mohen at 530.582.1340 or visit www.SITD.info
In compliance with governmental regulations, ID's with date of birth will be requested at the door.

SIMPLY GREEN



An accumulation of pine needles in rain gutters is a fire hazard. Clean out rain gutters at the start of the fire season.



The Great Pine Needle Debate

Pro: Fallen pine needles often serve as an important natural mulch, protecting bare soil from erosion. Fallen pine needles should be left in place.

Con: Dried, fallen pine needles are one of the most easily ignitable materials in Tahoe's forests. Fallen pine needles should be removed.

Compromise: In areas where dead pine needles are present, but are not covering bare soil, remove them. This includes dead needles that are still attached to trees; draped on live plants; lying on the roof or deck; covering awn and mulches; or lying on hard surfaces, such as sidewalks, patios, and driveways. In areas where fallen needles are covering bare soil, use the following recommendations. Within 5 feet of the house and deck, remove all dead needles

within 5 feet. Maintain a 1" to 2" layer of needles 5 feet to 30 feet all dead pine needles. For the area that lies 5 feet to at least 30 feet from the house and deck, maintain pine needles at a depth of 1 to 2 inches. Take care to avoid disturbing the "duff layer" if present, the dark area at the ground surface where needles are decomposing.

For more information about pine needle management in the Lake Tahoe Basin, contact your Conservation District office in California 530.543.1501 or in Nevada 775.586.1610. you can also call University of Nevada Cooperative Extension .775.832.4150.



BASSETT FLOORING

is family owned and operated and has served the Truckee-Lake Tahoe area since 1979. We carry high-quality hardwood flooring and carpet ideal for your mountain home. Visit us and explore our amazing selection at the Pioneer Commerce Center in Truckee.

Bassett Flooring's
Abbey Carpet
of Truckee-Lake Tahoe

10800 Pioneer Trail, Unit 3, Truckee
530 582.7428 bassettflooring.com

TIMBERWOLFE TREE SERVICE

**All Phases
Of Professional
Tree Work &
Defensible Space**

530-386-3340

***I Will Answer Your Call
7 Days A Week***

email: todd@twts.biz

GLENSHIRE DEVONSHIRE RESIDENTS ASSOCIATION



CALL FOR CANDIDATES GDRA Board of Directors

Deadline to submit candidacy application: July 7, 2017

2017 Board of Directors Election Scheduled

The Glenshire Devonshire Residents Association is a non-profit mutual benefit corporation governed by an elected five-member Board of Directors. The Directors serve in staggered terms of two years each. This year there are three positions open for election. 1,357 residents in the Association elect the board members. If no more than three members run for the open three positions the three members will be seated by acclamation without an election. If fewer than three members apply for the three open positions the empty positions may be filled by appointment of the remaining board members Article VII section 6 (e)

Candidates Required

Glenshire Devonshire Residents Association is soliciting candidates for three (3) open positions on the Board of Directors (each serving a two-year term). If you are interested in serving your community and to prepare you for service on the Board, you are encouraged to read your Association's Governing Documents (CC&Rs, Bylaws, Articles of Incorporation, Architectural Guidelines and Rules and Regulations). Contact GDRA's General Manager at 530.587.6202 with your questions.

What is the Board's Authority? First, check the Governing Documents! The Governing Documents of the Association provide the specific authorities and duties of the Board. Article IX section 1 of GDRA's bylaws outline the specific powers and job responsibilities of board members. The Davis-Stirling Act and other related laws that regulate corporations also provide specific authority and responsibilities to the Board. As a general outline, the Board has the following authorities:

- Overseeing the Association and its operations
- Setting Association policies and rules; and directing Management
- Enforcing Rules and CC&R's
- Making sound business decisions
- Directing and compensating its agents and employees

- Approving annual operating and reserve budgets
- Meeting at regular meetings to review general business of the Association and review monthly financial statements
- Conduct short and long range planning,
- Build a positive sense of community.

Board members are also required to:

1. Attend monthly Board Meetings and any special meetings.
2. Prepare for the Board Meeting so you are able to make informed decisions.
3. Work with groups/committees in the community to provide guidance.



4. Develop Community leadership by example.
5. Work with other Directors in a collegial relationship, presenting opposing views with professionalism and civility.
5. Provide assistance and feedback to the officers to assure success of the operations.
6. Continually strive to be better informed in the issues and laws to improve decisions.

How can you help?

You need to be informed about how your Association operates and how you can be an active part in its operations. Attend Board Meetings and consider running for the Board.

Directors are dedicated to the betterment of Glenshire Devonshire Residents Association. Any additional questions may be directed to Dan Warren, General Manager at 530.587.6202.

Candidate applications and timelines

Candidate applications are available online at glenshiredevonshire.com or at the Association offices. All candidates must be an owner of record of the association and in good standing with respect to all separate interests owned

and must be current with association payments and not subject to any suspension of membership privileges or in violation of CC&R's.

July 7, 2017, 4pm

This is the deadline to submit a candidacy application in order to participate in August 9, 2016 candidates night and have name printed on ballot. This submission shall include a recorded grant deed, conflict of interest and good standing statement. Please deliver to the Association at 15726 Glenshire Drive, Truckee, CA 96161.

August 9, 2017 6pm

Candidate Night Introduction / GDRA board meeting (held if more than three candidates apply).

September 2, 2017 11:30am

Annual Meeting at Glenshire Clubhouse and election results.

September 2, 2017

(directly following Annual meeting)

First Board Meeting & Election of Officers at Glenshire Clubhouse



HAVE FUN IN THE SUN WHILE YOU MAKE MONEY!

POSITIONS NOW OPEN

**LIFEGUARDS
SWIM INSTRUCTORS
PASS OFFICE/FRONT GATE
GROUNDS MAINTENANCE**

**\$11 - \$16
DEPENDENT
ON EXPERIENCE**

**INSTRUCTORS/LIFEGUARDS ARE ELIGIBLE FOR UP TO A
\$200 REIMBURSEMENT FOR CERTIFICATION CLASSES.**

summer JOBS

**APPLICATIONS AVAILABLE AT GLENSHIREDEVONSHIRE.COM
OR STOP BY THE GLENSHIRE CLUBHOUSE! PLEASE INCLUDE
A COVER LETTER AND A RESUME WITH YOUR APPLICATION.**

15726 GLENSHIRE DRIVE | 530.587.6202



Heaven's Best

Carpet Cleaning

Woman Owned Business

**Serving
Truckee/North Tahoe**

- Environmentally friendly
- Organic citrus base solution
- Safe for pets and people
- Low moisture process

530-320-4192
www.heavensbest.com

DRY 1 IN HOUR!

Mention this ad for 15% discount - 3 room minimum

The Annual Board Meeting, open to members to ask any questions of the Board.

Dumpster Day

Free Rides On TART from Glenshire to Town and back on New Year's eve.

Providing amenities cannot be fully discussed without a budget/finance associated discussion. However of more importance, is communication about how important it is to the Board to have member involvement and feedback at each Board meeting: 2nd Wednesday of every month at 6 PM. We provide ample opportunity for any member to bring up a topic they would like to discuss or have clarified. In an attempt to reach our community in a variety of ways, we send out the Shire to everyone, have a Facebook page, send out budget information via mail and email, and we have a website which gives current meeting minutes and a clubhouse activities calendar.

E-mail is the most cost effective and quickest way to get information to members. Currently, only about 1/3 of our members are signed up and so we strongly encourage everyone to participate. You can ask questions and get answers, and more important, get alerts about things happening in our community in real time, such as sudden smoke or fire.

This summer, there will be three Board seats opening for election. Board members are elected for a term of 2 years. No experience is needed to be on the Board—just a sincere desire to participate in and help our community. We want to encourage anyone interested in this process to come to Board meetings—find out what goes on and how each and everyone of you can influence what is done in Glenshire. In order for an election to be valid, we must have 25% of the members voting and each election costs \$5000-\$6000. Did you know that one third of the elections go uncontested, which means that current Board members continue in their capacity or a new member is appointed by the remaining Board to fill the vacancy?

Most of all, your Board would like to know member thoughts on how to increase community involvement in GDRA. The survey did show that many members need more information on how GDRA works. **THOSE THAT ATTEND THE MEETINGS KNOW WHAT IS HAPPENING AND MAKE THE DECISIONS. PLEASE COME.**

Sincerely,

Your GDRA Board of Directors:

Pam, Jamie, Marty, Sally, Mike



All-New Buffet. Unrivaled.

Toucan Charlie's
BUFFET & GRILLE

Saute & Grille • Carvery • Charcuterie
Far East • Pho • Sea Fare • Southwest
Specialty Made-to-Order Salads

Serving breakfast, lunch and dinner daily.

Forbes
TRAVEL GUIDE
RECOMMENDED 2017



Atlantis
CASINO RESORT SPA • RENO

WILDLIFE & CRITTERS



Owls in the Shire —By Dan Warren

The North American Cherokees call them uguuk, the Russians sovah, the Mexicans tecelote, the Ecuadorians huhua or lechusas, and aboriginal peoples of the Kaurna area of Australia winta. For centuries, indeed millennia, owls have played diverse and fascinating roles in a wide array of myths and legends.

Despite being elusive, owls have been fascinating humans for a long while. Owls have always been part of the root metaphors of how humans relate to the land. One of the earliest human drawings dating back to the early Paleolithic period was of a family of Snowy Owls painted on a cave wall in France. An awareness and understanding of the deep, complex perceptions of owls in the past may help support efforts to protect these species today.

Owls feeding in residential areas provide the benefit of killing large numbers of small rodents that might otherwise invade homes and spread diseases such as Hantavirus. Rodents can also cause damage by chewing support beams, electrical wiring and have been the cause of house fires. Owls help to keep these pest populations in check.

Owls are also widely sought out by bird watchers, who value sightings of these elusive and mysterious predators. Bird watchers

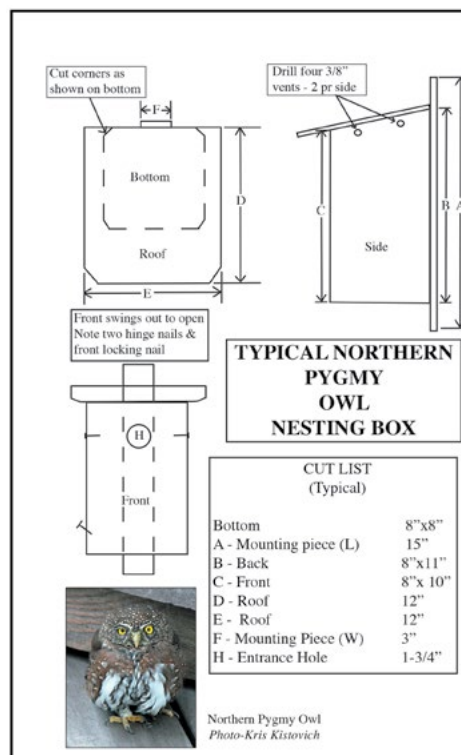
and other naturalists spend a great deal of time engaging in their pursuit of observing owls. I have had the pleasure of witnessing owls on occasion perched on the beams of the clubhouse in pre-dawn hours with their soft-spoken “Hoot” alerting me to their presence.

Owls are, however, threatened by other activities of humans. They are exposed to toxic chemicals in landscaping and the baits or poisons that are set to kill the prey they hunt. This has taken a toll on some species of owls. Additionally, the use of weed killers and chemical fertilizers will concentrate in rodents causing the rodents themselves to be poisonous to owls and other predators at the top of the food chain.

More important, however, have been the effects of habitat loss on owls. Urban, industrial, and agricultural developments all degrade the habitat of most species of owls and other native species, causing large reductions in their populations and even their disappearance from many areas.

There are ways for you to help offset our impact on their native grounds.

Keep pesticide and herbicide use to a minimum or stop using completely. Or, construct an Owl nesting box and place it in your yard. It’s an easy, fun project for you and the family.



GLENSHIRE DEVONSHIRE RESIDENTS ASSOCIATION



Vehicle Donation

Have a vehicle you don't use regularly? This winter has been hard in many ways, but if you have a vehicle that's been left outside and has been covered in snow, it may have suffered damage. It's not uncommon for vehicles that have been buried / covered in snow for long periods of time to have damage including, but not limited to:

- » Bent or broken springs / suspension
(you may not know until you start down the road)
- » Cracked windows
- » Bent body panels, hood, roof
- » Rust
- » Flat or stressed tires (they should be replaced)
- » Chewed rubber and electrical parts from Critter infestation
(mice, squirrels etc)
- » Depreciated value
- » Any vehicle stored outside this past winter should be checked out by a professional mechanic before use or you might be at risk of serious injury

Instead of paying for someone to tow away a vehicle that doesn't work or risk having the HOA send a letter asking you to remove it within 14 days, why not donate your vehicle to the Tahoe Truckee Community Foundation. www.ttcf.net. Save some money, get a tax write off, increase your property value, grow your self-esteem, help out our community and make your property look better. Want cash right now? There are several vendors that will pay you for vehicles running or not running.

SAVE TIME... SAVE MONEY.



Online Account Management

Download the SmartHub app and manage your TDPUD account from your **smartphone, tablet, or computer**. Available for iOS and Android.

- ✓ Make/schedule credit, debit, or checking payments with no processing fees
- ✓ Set up email notifications for alerts, payments, and emergencies
- ✓ Check your energy and water usage
- ✓ Update your information

Sign up today! Visit tdpud.smarthub.coop





TRUCKEE DONNER
PUBLIC UTILITY DISTRICT

(530) 587-3896 | tdpud.org




SIERRA

FEED AND SADDLERY

7460 S. Virginia St.
Reno, NV 89511

775.853.6700

BABY CHICKS ARE HERE!



Choose from a variety of breeds
Ameraucana, Rhode Island Reds, Delawares, Golden Laced Wyandotte, Mottled Houdans, Barred Rock and More

Sierra Feed offers everything both a seasoned or novice backyard chicken keeper needs to care for their flock.

We carry a large line of chicken-care products.
Come see us today!

www.sierrafeedandsaddlery.com

PERSPECTIVES



Where there's a will, I want to be in it.

The last thing I want to do is hurt you ... but it's still on my list.

Since light travels faster than sound, some people appear bright until you hear them speak.

If I agreed with you, we'd both be wrong.

We never really grow up—we only learn how to act in public.

War does not determine who is right, only who is left.

Knowledge is knowing a tomato is a fruit. Wisdom is not putting it in a fruit salad.

To steal ideas from one person is plagiarism. To steal from many is research.

I didn't say it was your fault, I said I was blaming you.

In filling out an application, where it says, "In case of emergency, notify..." I answered "911."

Women will never be equal to men until they can walk down the street with a bald head and a beer gut, and still think they are sexy.

You do not need a parachute to skydive. You only need a parachute to skydive twice.

I used to be indecisive, but now I'm not so sure.

To be sure of hitting the target, shoot first and call whatever you hit the target.

You're never too old to learn something stupid.

I'm supposed to respect my elders, but it's getting harder and harder for me to find one now.

**CUSTOMER SERVICE
IS OUR PASSION**

Mountain Hardware and Sports

100% Employee Owned

www.mountainhardwareandsports.com
11320 Donner Pass Road, Truckee • (530) 587-4844

Kelly Brothers Painting
INC
Solar • Drywall • Custom Finishing

Interior / Exterior Paint & Stain Services
• Residential & Commercial

Custom Finishing
• Color Consulting
• Furniture & Cabinetry
• Artistic Finishes
• Wallpaper Application

Drywall
• New Construction
• Remodel & Repair

Spray Booth
• Custom Refinishing
• Wood & Metal

Solar
• Renewable Energy
• Maintenance Services

Call today for a **FREE** estimate and consultation.

Reno Office
775.832.0806

Truckee Office
530.550.0806
KellyBrothersPainting.com
NV Lic #68238 | CA Lic #822843

Simple Power Solar
530.582.4006
SimplePowerSolar.com
Simple Power is a CA Division of Kelly Brothers Painting, Inc.
CA Lic #822843 | NV Lic #81359



TREES, BRANCHES, AND POWER LINES — A BAD COMBINATION by Elliot Jones

Trees can cause power outages when branches rub against power lines, break and fall on lines or when trees are blown over onto power lines during storms, representing one of the largest causes of power outages in California. They can also act as an ignition source for fire.

Liberty Utilities is committed to providing a safe and reliable electrical system to our customers by investing \$2.5 million annually into vegetation management. Reliability has steadily increased since initially making this commitment in 2011. In fact, our 2016 customer survey showed that the percentage of customers complaining about service interruptions was less than half of what it was the previous year!

What's the law?

As a California-based utility regulated by the CPUC, Liberty Utilities must maintain a reasonable amount of vegetation clearance beyond the minimum requirements to allow for several years' worth of growth, potential wind sway and other environmental factors. Distance obtained from the line after a pruning cycle may be more than 20 feet for fast growing species such as poplars or elms along distribution lines.

A minimum of four feet of clearance from vegetation to energized equipment is required during fire season and we strive to maintain that clearance year-round too. Hazardous trees, or parts of trees, with the potential to fall into utility lines must be removed.

Poles that carry non-exempt hardware (subject poles) require a ten foot radius of ground clearance around the pole and eight foot vertical clearance from encroaching branches and vegetation. (Public Resources Code 4292) A list of exempt/non-exempt hardware is listed in Calfire's Power Line Fire Prevention Field Guide: http://cdfdata.fire.ca.gov/fire_er/fpp_engineering_view?guide_id=15 Other rules and regulations are listed in the Field Guide also.

What About My Neighborhood?

In Spring 2016, we began tree trimming/removal activities along our Glenshire 7400 circuit which consists of about 32 miles of primary overhead power line. After the winter season (but with snow still on the ground!), our contractors resumed that work and will finish up in the Hirschdale and Tahoe City areas in the coming months.

What If I See A Problem?

If you have a tree on your property—or you observe one elsewhere—that you believe could potentially fall on one of Liberty Utilities' power lines, we want to know about it! **DO NOT ATTEMPT TO REMOVE OR TRIM THIS TREE YOURSELF!** Please go to our website at www.libertyutilities.com to find and complete a Tree Trim Request Form. Simply select your community on the homepage, then click on the "Safety" link at the top of the page, select "Electrical Safety" and scroll down to the "Tree Safety" link near the bottom of the page. You'll also find links on this page to websites for the CPUC, CalFire and California Department of Forestry for more information.



Eliot Jones has been the Manager of Vegetation Management and Regulatory Compliance with Liberty Utilities since June, 2016. He is a certified Utility Arborist and Qualified Tree Risk Assessor.

SCAM WARNING!



DON'T BE FOOLED!

Liberty Utilities is once again warning the public of aggressive scams targeting utility customers.

In addition to bogus phone calls and emails, individuals posing as utility workers may come to your home demanding access and payment.

DON'T BE FOOLED BY THESE SCAM ARTISTS!

We do not place calls, send emails or send representatives to customers demanding payment. Liberty employees wear badges and drive in vehicles that display Liberty's logo.

Call us at 1-800-782-2506

if you ever have any questions or to report a scam attempt.

To learn more, visit www.libertyutilities.com



Liberty Utilities®

CLUB INNISFREE NEWSLETTER

JUNE 1971

SALUTE TO TRUCKEE DAY!

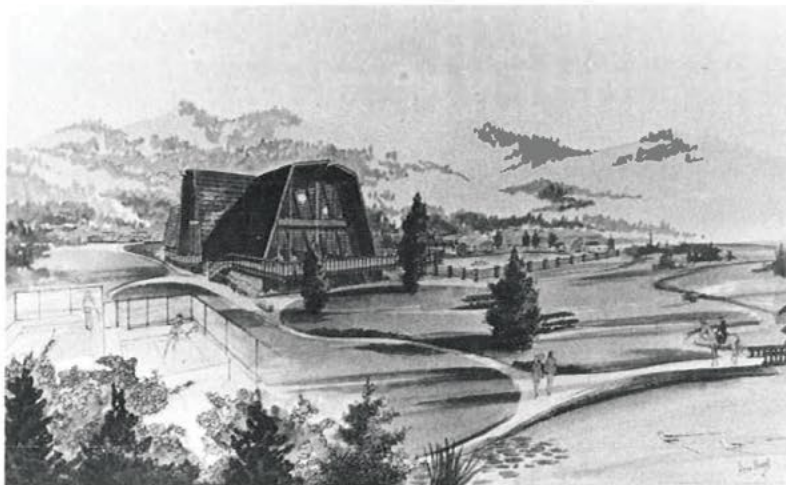
On April 17th, a parade through Truckee kicked off a day of celebration and fun for those who attended our first annual "Salute To Truckee Day"! Although the weather was snowy and cold, nearly 500 people enjoyed the outdoor barbecue, beer, 7-piece country band, speeches, carnival games and haywagon rides.

President David C. Irmer presented the architectural drawings of the new Clubhouse and stables (see cut), part of the Club Innisfree recreational amenities to be built this summer. Two tennis courts, a swimming pool and parking area will also be constructed as part of this facility, adding a new dimension to the existing Club facilities on Lake Tahoe.

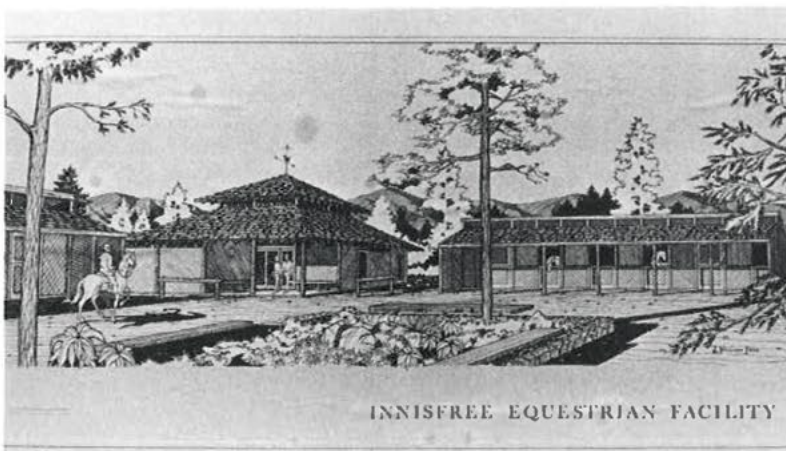
We had excellent representation from invited press from Southern California, the Bay Area, Lake Tahoe and Truckee. Additionally, Randy Beisler, Len Rhode and Stan Heindeman of the San Francisco 49ers participated in the festivities, as did Bill Dana who made a special trip from his home in Honolulu.

Property owners who braved snow warnings included Mr. and Mrs. Martin Schwager of Berkeley, the Junior Walter H. Knusts of San Jose, Mrs. Sterling Hoskins, Jr. of Milpitas, the William Berglands of Mt. View, Phyllis McDole, Mr. & Mrs. Carl Schatz, Mr. & Mrs. Jerry Wise, Mr. & Mrs. B. G. Crawford, Mr. & Mrs. Larry Smith, and the George Hennises from Stockton. There were also a number of property owners from Sierra Meadows, among them the August Siegrists who won a weekend at the Hyatt House/Monterey.

Among a group of property owners who got together for a



ARTIST'S RENDERING OF NEW CLUBHOUSE



INNISFREE EQUESTRIAN FACILITY

ARCHITECTURAL SKETCH OF NEW STABLES

steak barbecue at the Cabana Club afterwards were the Charles Villemains & Bob Fitzgeralds of Truckee, Mr. and Mrs. Bernard Thomas of Marysville, Mr. and Mrs. Kemble of Yuba

City, the Knox Perrys of Auburn, the Ralph Hiltons and E. R. Kilveins of Sacramento, Rachael Garner of Citrus Heights, the Richard Muellers of Reno, and Clarence Golomb of Vacaville.

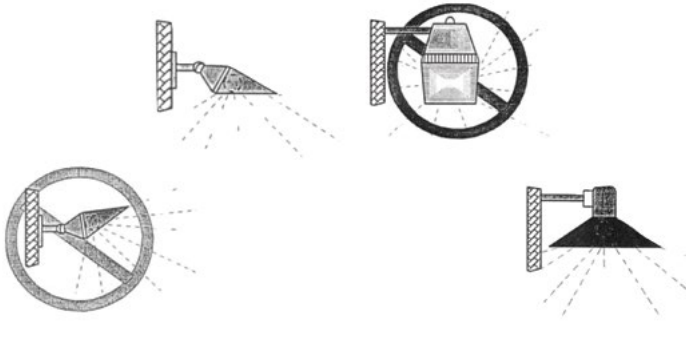
SUMMER BUILDING

From the looks of the construction picture now, there will be lots of sawing and hammering at Innisfree/Glenshire this summer. Among those currently working with their builders are the Walter Staffords of San Francisco, the William Warners of Redwood City, the James Arnos of Walnut Creek, the Alvin Tocksteins and Dr. & Mrs. Belfield of San Jose, Mr. & Mrs. James Holl of Palo Alto, the Eugene Hopkins of La Mirada, Bobbye F. Wedeen of Seal Beach, and Mr. and Mrs. Warren Lee.

NEW OFFICE LOCATIONS

The Innisfree Sales Office at Lake Tahoe is now located in the first model home at Innisfree/Glenshire, telephone (916) 587-4291. Club Innisfree will maintain its office at the Cabana beach and club in Kings Beach, telephone (916) 546-3365. The mailing address for the Sales Office and Club remains P.O. Box 1288, Kings Beach, CA 95719.

IDA Practical Guide



UNDERSTANDING DARK SKY EXTERIOR LIGHTING

Respecting Our Night Sky Neighbors

Most of us avoid a spotlight directed into our eyes. Please check exterior lights... are they acting like spotlights? Some residents believe spotlights provide security. Studies show that bright lights do not increase safety. Ironically, too much light can threaten security by compromising vision with glare and casting harsh shadows where criminals can hide.

So what can you do?

- Install lighting only when and where it is needed and always direct toward the ground.

- Use fully shielded fixtures at home and encourage their use in the workplace.
- Use energy saving features such as timers, dimmers, and motion sensors on all outdoor lighting.
- Educate your friends and neighbors about the economic, environmental and security benefits of good outdoor lighting.
- Stop by the Glenshire Clubhouse to see examples of proper exterior lights that meet our CC&R's.
- Join the International Dark Sky Association or visit their web site at www.darksky.org.

Town of Truckee Municipal Code: Title 18, development code 18.30.060G Outdoor Lighting Standards

G (1) Lamp and shielding. All light fixtures are required to be fully shielded and shall be installed in such a manner that the shielding complies with the definition of fully shielded light fixtures for all uses, including single-family and multi-family residential uses.

G (2) Light trespass standard. All light fixtures, including security lighting, shall be aimed and shielded so that the direct illumination shall be confined to the property boundaries of the source. Particular care is to be taken to assure that the direct illumination does not fall onto or across any public or private street or road. Motion-sensing light fixtures shall be fully shielded and property adjusted, according to the manufacturer's instruction, to turn off when detected motion ceases.



LOVE WHERE YOU LIVE.

YOUR GLENSHIRE LISTING & SALES SPECIALISTS

FIRST RATE MARKET KNOWLEDGE | HONEST ADVICE | STRAIGHT FORWARD COMMUNICATION



Val Videgain Team | Coldwell Banker Lake Tahoe Region
Valvidegain.com | CalBre 1494833
17400 Northwoods Blvd, Truckee, CA 96161
530.582.2400 Office | 530.412.1671 Cell
Top 1% Sacramento-Tahoe 2012-2016





E (2) All non-essential exterior commercial, recreational and residential lighting shall be turned off after business hours and/or when not in use. Lights on a timer are encouraged. Sensor activated lights are encouraged to replace existing lighting that is desired for security purposes.

B (2) Fully shielded. A light fixture that is shielded in such a manner that light rays emitted by the fixture, either directly from the lamp or indirectly from the fixture, are projected below a horizontal plane running through the lowest point on the fixture where light is emitted.

To further help with understanding the town's municipal code regarding outdoor lighting standards, we have broken down the legal "mumbo-jumbo" to these seven bullet points:

- If you can see a direct exterior light source (bulb or light through glass fixture) from outside your property it needs to be covered (shielded).
- All non-essential exterior lighting shall be turned off when not in

use. Lights on timers are encouraged and lights on sensors are encouraged.

- Bright, glaring and direct lighting creates safety issues, blinding you and creating shadows for criminals to hide in.
- Lighting that lights the ground makes it safer to walk by illuminating possible trip hazards. Bright direct lights blind you to possible dangerous conditions.
- Many studies have shown that bright lights are harmful to wildlife, effecting feeding, mating and more.
- Dark skies are one of the reasons most of us live in the mountains and not in the city (Los Vegas is a place better to visit).
- Proper lighting increases property values.

You can help improve Glenshire's safety, property values, mountain and wildlife environment by replacing light fixtures if needed. Please feel free to contact the GDRA offices with any questions. 530.587.6202. Help us keep Glenshire Devonshire a Dark Sky Region.



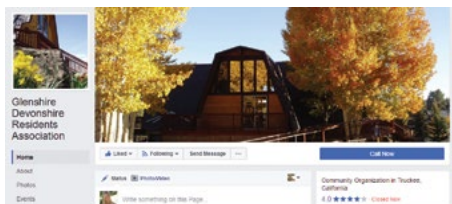
DEAR GROWN UP ME,
BY THE TIME YOU READ THIS I HOPE
I'M ALL THE THINGS I'VE DREAMED
ABOUT. I DON'T KNOW IF I'M A
PHYSICIST YET OR AN ARTIST BUT
WHATEVER I BECOME, I HOPE I'M
DOING INCREDIBLE THINGS. ALONG
THE WAY I HOPE I TOOK RISKS.
I HOPE I LEARNED THAT SUCCESS
IS IMPOSSIBLE WITHOUT TRYING.
AND I HOPE I'VE BEEN CONFIDENT
THROUGH IT ALL. MOST OF ALL, I
HOPE I'M UNAPOLOGETICALLY
ME—THAT PERSON THAT I'VE
ALWAYS WANTED TO BE.

WOODWARD

WHY ARE WE MORE THAN A CAMP? BECAUSE WHAT KIDS EXPERIENCE
HERE WILL LAST A LIFETIME. WE INSPIRE, MENTOR AND NURTURE
THEM THROUGH OUR SENSE OF COMMUNITY AND OUR AMAZING
PROGRAMS AT OUR SPECIALIZED FACILITIES ACROSS THE COUNTRY. TO
LEARN MORE ABOUT WHAT YOUR CHILD COULD EXPERIENCE FOR
SUMMER 2017, VISIT US AT CAMPWOODWARD.COM

BULLETIN BOARD

NEWS, MESSAGES, NOTICES



We love Facebook

As we see social media sites come and go in many different forms we are keeping it simple and only posting on Facebook, our website and e-mails. This way you don't have to spend time trying to find us on a hundred different media sites. Like us on Facebook and see all the greatest happening and latest information in and around Glenshire.

Stay Informed

Would you like to keep up on what is happening in Glenshire and Devonshire? Stop by the GDRA offices and complete the E-Consent form and we will email you information that affects our community and the board agendas. Better to find out before it happens than after it happened. We do not send a lot of emails! Like us on Facebook to view regular postings of happenings in Glenshire/Devonshire.

Please note that unless you request it or it is required by law, your e-mail address will not be given out to anyone and will only be used by GDRA to provide information pertaining to events and business related to the Glenshire Devonshire Community. You may be taken off this confidential list by request.

glenshiredevonshire.com

Visit us online. The website is loaded with information; CC&R's, Bylaws, Policies, Rules and Regulations, Clubhouse Rental Information, The Shire, Pool Schedule, Board Meeting Minutes, and more. All may be downloaded. As always, feedback, whether critical or complimentary, is important to us. Can't find what you're looking for? E-mail us at glenshire1@sbcglobal.net.

Glenshire Lake

Recreational activities in or on the lake, such as swimming, ice-skating or other similar activities, are not endorsed or recommended by the Association. The Association assumes no responsibility for any such use. Please enjoy the beauty, don't litter, control and pick up after your pets.

Lake Trail Fundraising Campaign

A huge thanks to everyone who has donated towards the lake trail! If you haven't made a donation to the Lake Trail yet, please take a minute and send it to the Glenshire Lake Trail Project, in care of the Truckee Tahoe Community Foundation, P.O. Box 366, Truckee, CA 96161. Many upgrades and drainage revisions are being planned. Contact the GDRA offices to be on the Lake Trail Committee.

SOS Glenshire

Interested in preserving quality of life around your community? SOSG (Saving Open Space Glenshire) is a local group partnered with Mountain Area Preservation, putting efforts toward preserving open space and the quality of life that we and the wildlife now enjoy. A proposed 185+ parcel development east of Glenshire is in the review process - NOW is the time to get involved! sosglenshire.org.



Advanced Dog Training Classes

These advanced classes are designed for people who have participated in a reward-based puppy or basic dog training class program and are ready to take their dog or puppy to the next level of training. The emphasis of this class will be on strengthening their focus on their person around distractions, as well as teaching them to respond at a distance. Continuing the training and socialization of the dog will help to transform them into the kind of companion all of us love to have around!

Instructor, Jeanie Collins Duffield is a Certified Dog Trainer and Canine Behavior Consultant; she began her company, BEYOND OBEDIENCE, a puppy and dog behavior consulting and training business, in 1980. Jeanie can be reached at 530.400.DOGS (3647), Jeanie@beyondobedience.com or www.beyondobedience.com.

Search ALL TAHOE DONNER Properties FOR SALE:
www.ISellTruckee.com/Shire

21 years at Bar of America® in Historic Downtown Truckee have taught Bill a thing or two about tending to your needs. Welcoming Bill to Real Estate and Tahoe Truckee Brokers.

Get in touch with Bill or Nancy (Boss/Wife) today!

BILL KENNY

REALTOR®

California BRE # 02021388

Bill@TahoeTruckeeBrokers.com

530.448.0694: CELL



NANCY COSTELLO

BROKER-OWNER

California BRE # 01256997

Nancy@ISellTruckee.com

530.426.5005: CELL



Novice/Beginner Line Dance Class

Anyone over 12 years of age interested in learning to line dance. This class is geared for those who are new to line dancing and or to dancing in general. No special shoes or clothing needed.

When: Most Tuesdays, 7 – 8:30pm

Where: Glenshire Clubhouse

How Much: \$5.00 per person

Questions: Contact Robin Reese at
rbtahoe@sbcglobal.net

Clubhouse Dumpster

If you have extra garbage, give us a call to see if we have room in our dumpster. Please do not dump your personal trash without permission. If we have room, we don't mind helping, but please ask!
Wednesdays are preferred.



Play Date Preschool & School Age Program

Before and after-school childcare at the Clubhouse. Mornings 7:30 to 9:00am for all grades. Afternoons 1:15 to 5:30 for Kindergarteners and 3:15 to 5:30 for 1st through 5th grade. Please call 530.582.0441 to reach Darlene Wilson, Owner/Director.



Emergencies, Wildfire, Crime, important information!!!

Nixle is a communication tool utilized by the Truckee Police Department and Truckee and Northstar Fire Departments to provide important communications to the community through email and text messages. Signing up is fast, easy and free. For more information visit the Police Department or go directly to www.nixle.com and sign up today.

Terra Firma Fitness Yoga & Massage

When: Thursday mornings 9:30 – 10:30am

Contact: Amylu@thegrid.net, 209.662.4146,
terrafirmafitness.com

Prices: \$12 drop-in, \$50 for 5-pack

Where: Glenshire Clubhouse



NEW COIN LAUNDRY

- **EASY Parking**
- **Clean, Convenient, and Comfortable**
- **WiFi/TV**
- **Table Seating**

LINEN SERVICE

- **Residential & Commercial Service**
- **High Quality Care**
- **Affordable Rates**
- **Call 530.587.9274**

11430 Deerfield Dr. (Next to Wongs)
truckeelaundry.com



- Crane & Technical Rope Removal
- Hazardous Tree Removal
- Defensible Space
- Tree Trimming/Limbing
- Chipping
- Stump Grinding
- Decorative Milled Wood

24 Hour Emergency Service
Free Estimates
530.541.TREE
530.318.4775
CodysTree.com

**Renew Your Pool
Pass Online!**

May 27th
Pool Opens for Weekends

June 24th
Pools Open Daily



The Streets Shine Brighter in Truckee

TRUCKEE Day

Saturday
June 3, 2017

**STREET CLEAN UP AND
TOWN-WIDE BLOCK PARTY**

BRING YOUR WORK GLOVES

Truckee Day is a town-wide street clean up and civic-pride day, now in its fourteenth successful year! Plan to be part of the fun on Saturday, June 3, 2017. Check in stations will open at 8am – get there early to get your materials, volunteer t-shirt, and free lunch ticket. Pre-registration is not required.

You'll be assigned a stretch of road to clean in your neighborhood. Children are welcome as long as a responsible adult accompanies them.

Then, join your friends and neighbors at the Town-wide block party starting at noon at Truckee River Regional Park on Brockway Road.

Local non-profit organizations and public agencies are invited to setup a booth at the block party as part of our Community Expo.

Weed Warrior stations will be set up at Pioneer Trail, Tahoe Donner, Glenshire and the Ponderosa Ranchos. For more information on how you can help, call Jeanette Halderman at Truckee River Watershed Council 530.550.8760 x6. Bring your work gloves and trowels!

For more information please contact Erica at the Town of Truckee 530.582.290



**Glenshire
General
Store**

Your Local Grocery Store

(530) 587-1819
10095 Dorchester Drive
Truckee, CA 96161

gift certificates available





YARD WASTE CLEAN UP

PROTECT YOUR HOME & OUR TREES

- REDUCED RATE DUMPSTERS**
May 1- September 30
Delivered Friday
Picked up following Wednesday
Yard waste only, NO BAGS
\$60
Call TTSD to reserve
(530) 583-7800
- NEIGHBORHOOD DROP-OFF DAYS**
Check keeptruckeegreen.org for dates
and locations on FREE drop-off bins
- DROP-IT-OFF FOR FREE!**
NOW through October 31
Eastern Regional Landfill
Self-service, NO BAGS




PINE NEEDLES-PINE CONES-BRANCHES-DEAD WOOD-SHRUBS

WILDFIRE IS COMING. ARE YOU READY?



Defensible Space is your property's front line defense against wildfire. Creating and maintaining defensible space around your home can dramatically increase your home's chance of surviving a wildfire and improves the safety of firefighters defending your property. 100 feet of defensible space is required by law.*



ONE LESS SPARK
ONE LESS WILDFIRE

TWO ZONES MAKE UP THE REQUIRED 100 FEET OF DEFENSIBLE SPACE:

ZONE 1: 30 feet of Lean, Clean & Green

- 1 Remove all dead plants, grass and weeds.
- 2 Remove dead or dry leaves and pine needles from your yard, roof and rain gutters.
- 3 Keep tree branches 10 feet away from your chimney and other trees.

ZONE 2: 30-100 feet of Reduced Fuel

- 4 Cut or mow annual grass down to a maximum height of 4 inches.
- 5 Create horizontal spacing between shrubs and trees.
- 6 Create vertical spacing between grass, shrubs and trees.

Use Equipment Properly to Keep from Sparking a Wildfire

- 7 Mow before 10 a.m., and never on a hot or windy day. String trimmers are a safer option (vs. lawnmowers) for clearing vegetation.



VERTICAL SPACING

Large trees do not have to be cut and removed as long as all of the plants beneath them are removed. This eliminates a vertical "fire ladder."



HORIZONTAL SPACING

Create horizontal and vertical spacing between plants, the amount of spacing will depend on how steep the slope is and the size of the plants.

*For more information on creating defensible space and legal requirements visit

READYFORWILDFIRE.ORG



The Shire
15726 Glenshire Drive
Truckee, CA 96161

Prst-Std
US Postage
PAID
Sierramail
96143

2017-18 TAHOE SUPER PASS

BUY NOW **SKI FREE**
BEST RATES **THIS SPRING**
INTO JULY 4TH

 **SQUAW VALLEY**
ALPINE MEADOWS
TAHOESUPERPASS.COM