



THE Shire

MARCH 2013

Glenshire/Devonshire Residents Association Magazine

FEATURE ARTICLE | By Sally Lyon, GDRA Board President

Spring is around the corner and there are many important issues facing our community. Canyon Springs, a close to 300 acre potential development is moving forward. This 185-parcel development will have a large impact on our neighborhood. The public Draft Environmental Impact Report comment period ends March 6, 2013. The EIR consultants will then review and respond to the comments that have been submitted. Many of our residents have expressed their concerns ranging from traffic, wildlife, water quality and erosion, and impacts to the Glenshire Lake. There are pros and cons to this project, there is no doubt, but regardless, there will be many impacts to our community and environment.

If you want to write any comments, you have until March 6th to submit

to Denyelle Nishimori, Town of Truckee Planning Department. I hope you will consider getting involved and expressing your concerns.

Have you taken the opportunity to enjoy the recently-improved trail around the Glenshire Lake? With the addition of the new boardwalks through the meadow and improved surface on much of the dirt portions of the trail, this leisurely walk is a joy. Added bonus is the abundant water fowl and birds, as well as views of the crest of the Sierra to the west and Mt. Rose to the east; what a delight. It is a great spot to watch a sunset or full moon rise. This is truly a special amenity.

Still to be completed on the trail is the portion at the western end where the dam is located. This portion will

be an expensive endeavor and will require both donations and grant funding. As funding comes available, GDRA would like to add trails into the open space around the meadows to the north of the Clubhouse to extend the trail system.

Many thanks to the Boy Scouts, Truckee River Watershed Council, Town of Truckee, and our GRDA staff.

Last, please review the information about our amenities (page 2) and take a few minutes to fill out the brief questionnaire (page 11). You can mail or email it back, or drop it off at the clubhouse. There is a box for drop off right outside the front doors, on the wall. (Return by March 20th!)

Our email address is glenshire1@sbcglobal.net.



Renew MD
Medical Spa
730 Sandhill RD Ste 200 Reno, NV 89521
www.renewmdreno.com



VENUS FREEZE



What if you could smooth your wrinkles, tighten your loose skin, improve cellulite and reduce your measurements... all without surgery, completely safe and pain free?

Now you can with Venus Freeze!



Venus Freeze is cleared for the FDA for Non-Surgical Skin Tightening and Temporary Reduction of Cellulite.

Renew MD is now offering the new Venus Freeze for Painless, Non-Surgical Body Contouring, Cellulite Reduction and Skin Tightening for the Face, Neck and Body.

Call us at (775) 852-4500 to schedule your free consultation today!

Visit our website at www.renewmdreno.com



Glenshire/Devonshire Residents Association Amenity Overview

Currently there are 7 primary amenities offered by Glenshire Devonshire Residents Association (GDRA).

- Swimming Pool
- Lake Trail
- Tennis Courts
- 236 acres of open space
- Club House
- Picnic/Playground Area
- Gazebo

Only the clubhouse gazebo and swimming pool uses are fee based. There is no current policy that restricts non-association member access to the other amenities. The Lake Trail is constructed with public funding therefore has free public access.

These amenities all have some cost to GDRA members. The swimming pool costs a net average of \$78,000 annually over the past two years.

- Approximately 25% (\$65) of all Glenshire Residents annual assessments go directly to pool costs.
- Less than 36% of members use the pool.
- The only fees for using the pool are a one-time pass fee of \$10 and a daily fee for guests of \$5.
- The pool is only available for use 3 months of the year.
- \$200,000 is budgeted for aging pool equipment replacement for 2015.

The rest of the amenities, with the exception of the clubhouse, do not have any significant annual costs.

- \$90,000 reserves are in place for the 2016 tennis court replacement (a use fee could help offset the costs). This expense recurs every 25 years.
- \$3,500 is budgeted for trail maintenance for 2013.
- The clubhouse has a usage fee to help cover costs, as well as being used as the GDRA offices.

The association board is looking at ways to help cover the costs of the pool and tennis courts by having a daily or annual use fee for these amenities. It is not practical to cover 100% of costs, but a daily or annual use fee could help keep member dues low and possibly free up funds to enhance amenities for the entire membership.



My Grandma's Handbag
Funding Creativity for Children

THRIFT MARKETPLACE

Proceeds help children explore creative education

20% Off
Entire Purchase
with this coupon • expires 4/30/2013

10038 Meadow Way, Suite B
Next to Tahoe Forest Hospice Gift & Thrift • Truckee
Open 10am - 5pm M-Sat, 12 - 4pm Sun • 530.550.8250
Donations are Tax-Deductable



Connect With Your Community By Volunteering

Volunteering is a perfect way to show you agree that Truckee is a great place to live and a great community. You have unique and special skills and experience to offer. If you're interested in volunteering, and could use some help finding just the right opportunity to do so, take some time to visit www.HandsOnTahoe.org.

Hands On Tahoe (H.O.T.) is a project of the Truckee Tahoe Community Foundation. The Hands On Tahoe website exists for the sole purpose of connecting prospective volunteers with local non-profit organizations. The website lists over 115 current volunteer opportunities with more than 30 local non-profit organizations. Some great organizations looking for help and include Sierra Senior Services, the Humane Society, Truckee's Family Resource Center, and the Tahoe Forest Hospice, just to name a few.

If you want to volunteer, go to the website, click on Volunteer; then search all or by criteria you choose. You can search for volunteer opportunities that fit your specific interests and skills. Or you can register as a volunteer on the website to receive notice of opportunities that come in after your visit. The H.O.T. staff will send you an email if your interests and skills match what the non-profit organization is looking for.

Here are a few examples of volunteer opportunities currently posted (details and contact information on our website):

1. Big Brothers/Big Sisters of Nevada County is looking for volunteers to mentor kids in Truckee, Kings Beach, and the North Tahoe area.
2. Provide foster care for dogs and cats residing at the Humane Society of Truckee-Tahoe.
3. Tahoe Forest Hospice needs volunteers to provide office support.
4. Truckee Donner Recreation & Parks District seeks drivers for occasional trips for local seniors.

If you are with a local non-profit organization in need of volunteers, your organization can list the opportunity with Hands On Tahoe easily and absolutely free. Just click on the link for non-profits and complete the form. Your opportunity will soon be posted and registered volunteers matching your needs will be notified.

We hope you'll use HandsOnTahoe.org to connect with your community and support the area's non-profits!



The Shire is the official publication of the Glenshire/Devonshire Residents Association published by Creative Concepts Media + Marketing

Truckee • Reno

P | 530.582.4100

F | 530.582.4414

laura@creativeconceptsmedia.net

www.creativeconceptsmedia.net

BOARD MEMBERS

Sally Lyon, President

Dan Engler, Vice President

Don Boehm, Treasurer

Charles Timinski, Secretary

Martha Frantz, Director at Large

DESIGN REVIEW COMMITTEE

Ron Boehm

John Hoekman

GDRA STAFF

Dan Warren, General Manager

Lori Kelley, Administrative Assistant

CLUBHOUSE OFFICE

15726 Glenshire Drive

Truckee, CA 96161

P | 530.587.6202

F | 530.587.7045

CONTACT US

Main Office: 530.587.6202

Pool Pass Office: 530.587.5519

email: glenshire1@sbcglobal.net

BOARD OF DIRECTOR MEETING SCHEDULE

6:30pm at the Glenshire Clubhouse

15726 Glenshire Drive

March 13, 2013

April 10, 2013

May 8, 2013

June 12, 2013

July 10, 2013

August 14, 2013

DESIGN REVIEW COMMITTEE MEETINGS

Design Review Committee (DRC) meets the 2nd and 4th Tuesdays of the month at 7am. DRC meetings will be canceled if no items are on the agenda 10 days in advance of the meeting.



© Parkhill Paint Decor Inc. | 530 448 9331 | www.parkhillpaintdecor.com

Remodeling— Don't Wait Any Longer!

Your home is your castle, your sanctuary from the adversities of life. But even castles need a little TLC after a few years! Updating, remodeling, or adding on to your home can make that "Home Sweet Home" even sweeter!

This is a great time to think about remodeling your home! It starts with an idea. What about updating or replacing your kitchen or bathroom fixtures, lighting, and flooring? Maybe adding some square footage to extend the usefulness of your living space? Or focusing on outside improvements, such as new siding and an enlarged deck for those summertime BBQs?

The slowdown in new home construction means homeowners have a far wider selection of builders and lower labor costs - creating a competitive construction environment. These factors make NOW the best time in the last 15-20 years to remodel or build an addition!

Here are some other points to consider:

- For projects requiring a building permit or dirt moving, you may need several months to get your boundary survey done, have an architect draw your "as-built" (current) and proposed plans, and submit your permit for approval.
- Check your CC&Rs for what is and isn't allowed in Glenshire/Devonshire.
- Smaller projects, usually less than 500 square feet, do not require the payment of mitigation fees to local government or special districts.
- Retrofitting with "green" energy efficient appliances or materials may generate a rebate back to you!
- Financing a home improvement project, rather than paying cash, may give you a new tax deduction in the form of interest paid on the home improvement loan. Consult your tax advisor for guidance.
- Think about recycling as much of your construction waste as possible.

jazzercise®

FUN & EFFECTIVE workouts DO exist!

NEW! Beginning April 9
Classes at the Glenshire Clubhouse
 15726 Glenshire Drive
 TUES • THURS • FRI 10:30am

\$30 Glenshire Clubhouse First Month
 Unlimited Classes (new students only)

Classes at the Rec Center
 8924 Donner Pass Road
 MONDAY-SATURDAY 9am

\$35 Rec Center First Month
 Unlimited Classes (new students only)

Contact Karen for more information
 925.286.5316

TRUCKEE RIVER GLASS, INC.

SERVING TRUCKEE/TAHOE FOR 30 YEARS

Custom Is Our Standard

MIRRORS

SHOWERS

WINDOWS

DOORS

COMPLETE GLASS SERVICE

Featuring Windows with their "Lifetime" warranty

Come visit us at our showroom!

10121 Church Street • Truckee
530.587.4040
 truckeeriverglass@sbcglobal.net
 www.TruckeeRiverGlass.com

- Where your remodeling project takes a bathroom or kitchen temporarily out of use, make your backup plans in advance to keep life rolling along smoothly.

Some improvements get done because you want them – you just aren't going to suffer through another winter without a kitchen pantry! Other improvements make sense from an economic perspective. Are you thinking about the cost of the improvement versus the increase in value? Check out this website for some general numbers on rate of return: www.costvsvalue.com. According to that source, a minor kitchen remodel done in 2011 will generate about a 72% return in value, while a wooden deck addition will generate a 70% return in value.

Now is the best time to start your planning and the Contractors Association of Truckee Tahoe can help!

Instead of flipping through pages of the phone book, look to CATT as your

best source for reliable referrals to the building industry. CATT members know the regulations and weather! They know what works and what doesn't work in our unique environment. CATT members are expected to abide by a Code of Ethics, which gives you, the homeowner, assurance that high standards of conduct, excellent customer service, and remarkable craftsmanship are the norm, not the exception. CATT can also help you disseminate your job description to members for multiple bids, saving you precious time and energy. A directory of CATT members is available in the Glenshire Clubhouse.

Days slip by and become weeks. Weeks become months. Don't wait any longer. If you want or need a change to "Home Sweet Home," call CATT to get the wheels turning. Make your dreams come true!

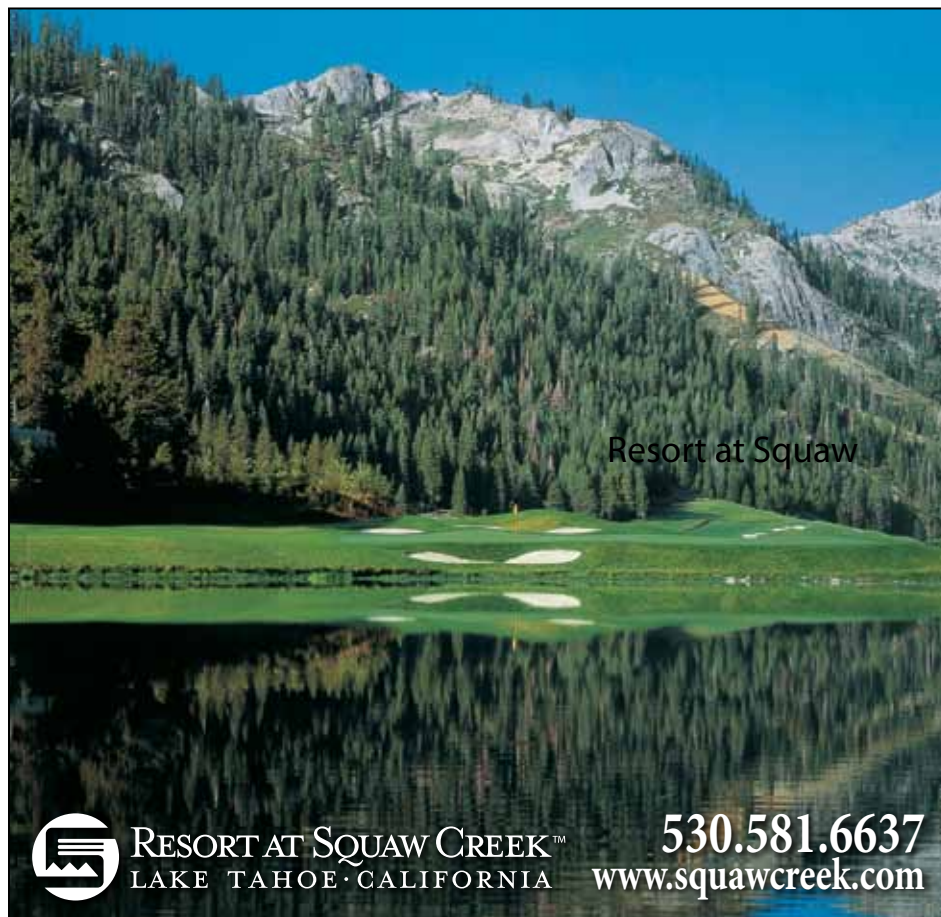
For more information contact CATT: 530.550.9999, info@ca-tt.com, or www.ca-tt.com/Remodel



Remodel your lifestyle ...

CATT
Contractors Association of Truckee Tahoe
www.ca-tt.com
info@ca-tt.com
530.550.9999

CATT takes great care in assisting property owners who want to find qualified and reliable designers, builders, specialty contractors, suppliers, and others for their remodeling and new construction projects in the Truckee/Tahoe region. Looking for multiple bids? Visit CATT's website. Click on the "Request Construction Bid" icon and simply fill out the form. CATT does the rest.



Resort at Squaw

530.581.6637
www.squawcreek.com

RESORT AT SQUAW CREEK™
LAKE TAHOE · CALIFORNIA

2013 Season Passes
on sale for
Only \$599*
Limited time offer!

Enjoy unlimited golf,
(based on availability)
dining & shopping
discounts at
Resort at Squaw Creek™

Creek Cards also available for
\$99
Card holders receive 50% off
green fees

*Sale ends May 24, 2013



Need A Summer Job?

Summer life guard positions available at the Glenshire pool. Don't wait to get the best summer job in eastern Truckee!!! Contact GDRA offices 530.587.6202

Part Time Work!

Part-time office administration work available. Approximately 10 hours a week. Contact GDRA offices 530.587.6202

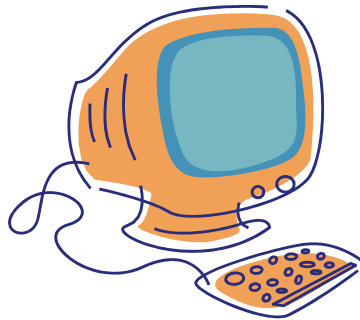


Stay Informed

Keep up on what is happening in Glenshire and Devonshire, send us your E-mail address and we will send any information and board agendas that will affect our community. Better to find out before it happens than after it happened. E-mail us at glenshire1@sbcglobal.net and ask to be put on the news and information list. Please note that unless you request or required by law all e-mail addresses will be not be given out to anyone and will only be used by GDRA to provide information pertaining to events and business related to the Glenshire Devonshire Community. You may be taken off the confidential list if you request.

Glenshire Lake

Recreational activities in or on the lake, such as swimming, ice-skating or other similar activities are not endorsed or recommended by the Association. The Association assumes no responsibility for any such use. Please enjoy the beauty, don't litter, and control and pick up after your pets.



GlenshireDevonshire.com

Visit us online at glenshiredevonshire.com. The website is loaded with information; CC&R's, Bylaws, Policies, Rules and Regulations, Clubhouse Rental Information, The Shire, Pool Schedule, Board Meeting Minutes, and more. All may be downloaded. As always, feed back, whether critical or complimentary, is important to us. Can't find what you're looking for? E-mail us at glenshire1@sbcglobal.net.



New Paint? Replacing your roof? New siding?

CC&R 5.01 (a)(b)(c) allows the Design Committee or the General Manager to make a summary approval of any alteration of buildings, walls, decks, fences, and exterior structure alterations. No money, no application, just no bright purple houses with polished aluminum roofs please. Please stop by the office and show us the changes to prevent compliance issues down the road.



Clubhouse Dumpster

If you have extra garbage, give us a call to see if we have room in our dumpster. Please do not dump your personal trash without permission. If we have room, we don't mind helping, but please ask!

Play Date Preschool & School Age Program

Play Date Preschool and School Age program offers our community before- and after-school childcare at the Clubhouse. It's for children from Kindergarten to fifth grade, 7:00 to 8:45am and 1:30 to 5:30pm. In addition to daily care an ACTIVE and FUN Summer Recreational Program begins in June. Summer program includes swimming at the Clubhouse pool on M, W, and F and off-site field trips T, TH. Please call 530.582.0441 to reach Darlene Wilson, Owner/Director.

Church Service

Faith Baptist Church meets every Sunday. Service is at 10:00 am. For more information, call Pastor Wood at 775.750.8856.

FREE Contractor Directory Now Available

The 2012 Contractor Directory is now available by calling the Contractors Association of Truckee Tahoe (CATT) www.ca-tt.com 530.550.9999 or emailing a request to: info@ca-tt.com.

There is no charge to receive a copy. The Directory is published by CATT and includes more than 200 names of local builders, associated professionals, suppliers, and others involved with the construction industry in the Truckee/North Tahoe region. Pick up a copy at the Association Office.

SOS Glenshire

Interested in preserving open space in your community? SOS (Saving Open Space) Glenshire is a local group partnered with Mountain Area Preservation, putting efforts toward preserving open space and the quality of life that we now enjoy. They are always looking for new members to help. Canyon Springs DEIR comment period ends March 6, 2013.
www.sosglenshire.org

jazzercise®

Jazzercise Is Coming To Glenshire!

Get in shape for summer with Jazzercise classes starting in the Clubhouse April 9. Classes will be taught Tuesday, Thursday and Friday mornings at 10:30am*. First class on April 9 is free for all who attend. If you are not familiar with the program, it is an upbeat, choreographed hour of fun and fitness set to great tunes. To get new students started, unlimited classes are being offered at an introductory rate of \$30 for the first month.

Local instructors Karen, Sherri and Emily will take you through the paces. All three are Jazzercised trained and have been teaching for years. Jazzercise classes are also offered Monday through Saturday mornings at 9am at the new Recreation Center. New students may join those classes for the first month at \$35.

So get moving and join Jazzercise! If you have any questions, please call Karen at 925.286.5316.

*We do not have use of the Clubhouse facility on TTUSD school holidays and snow days.



Zumba® Fitness Dance Classes

Get ready to shimmy, shake and groove Glenshire at the Clubhouse Monday and Wednesday mornings.

What is Zumba®? The Zumba® program fuses hypnotic Latin and international rhythms and easy-to-follow moves to create a one-of-a-kind fitness program that will blow you away. The routines feature interval training sessions where fast and slow rhythms and resistance training are combined to tone and sculpt your body while burning fat. Add some Latin flavor and international zest into the mix and you've got a Zumba® class.

Zumba® is for everyBODY! I am a new Mom getting back into shape with Zumba, Michelle and I will help you get an effective and fun workout at whatever your fitness level.

Rates: First class is FREE! \$10 - drop in rate. Monthly Unlimited Rate also available.

Time: Monday and Wednesday mornings from 9:30-10:30am.* Classes run through Monday, June 17, 2013.

Instructors Contact Info:

Nora - NoraBeauchamp@Gmail.com
Michelle - MichelleFarrell@Prodigy.net

*We do not have use of the Clubhouse facility on TTUSD school holidays and snow days.

Lake Trail Fund Raising Campaign

If you haven't made a donation to the Lake Trail yet, please take a minute and send it to the Glenshire Lake Trail Project, in care of the Truckee Tahoe Community Foundation, P.O. Box 366, Truckee, CA 96161. Stop by the clubhouse to view the color rendition of the lake and trail with boardwalk, bridge, signage and landscaping. Better yet, take a quick stroll along the sections that have been completed.



Advanced Dog Training Classes

These advanced classes are designed for people who have participated in a reward-based puppy or basic dog training class program and are ready take their dog or puppy to the next level of training. The emphasis of this class will be on strengthening the dog's focus on their person around distractions, as well as teaching them to respond at a distance. Continuing the training and socialization of your dog will help to transform them into the kind of companion all of us love to have around!

Instructor: Jeanie Collins Duffield is a Certified Dog Trainer and Canine Behavior Consultant; she began her company, BEYOND OBEDIENCE, a puppy and dog behavior consulting and training business, in 1980. Jeanie can be reached at 530.400.DOGS (3647), Jeanie@beyondobedience.com or www.beyondobedience.com.

Other Info...

Remember that Thursday is garbage day. Please keep your garbage cans secured and your dogs confined. It's a good idea to put your garbage out in the morning, not the night before. Remember that CC&R 6.07 states garbage containers need to be stored in an area not visible by others. Let's try to keep the garbage off of our streets and out of the open space.



Color.... Your Self Expression

Color is the visual definition of style and design and often expresses one's experiences and beliefs. Bold colors and design are the risk takers, best stated as, "This is who I am, bold and edgy." Warm woods and neutral tones are those who tend to find comfort in nature and use color in conservative tones or just a splash of color to accent. Pastel colors define the lighter side of life from childlike whimsy to qualities of freshness and light. Deep colors, rich tones and dark woods play on the drama of life from banking baron to the intellectual designs defined in old world style. The use of metals and shades of grey used with scrutiny and accent against white or beige tend to be the minimalist's attraction to sterile impeccability.

What's Your Color Personality?
Color defines your taste and the way

you like things to feel whether it be an ultra-conservative touch to the unconventional Bohemian. Color follows you everywhere and is most suitable when it provides a sense of wellbeing in regard to your life-style.

How Do You Discover Your Color Expressions? Simply, what are you attracted to? Grandma's quilt of spring greens and soft pastels, dark rich wood tones of a Spanish carved dining room table, the fall harvest of pumpkins and the crisp red of a fresh picked apple, the multiple earth tones woven into a tie, or the old leather chair whose worn hide defines the sweat equity it took to achieve success. Take a minute to take inventory of what really attracts you? What object defines you best? What color always seems to show up when you are deep in thought or riding high on play? Pay attention to your surroundings when feeling rested and relaxed? What art piece draws you in or painting captures your sense of truth or beauty? What do you like in nature, during business hours, while dining, playing with your kids, or while traveling to the edges of the earth? In all cases become aware of your surroundings and how it makes you feel. Discover the colors that define your best world.

Undecided? No problem, hire a color consultant to help with your color decisions. Local color consultant Erin Kelly of Kelly Brothers Painting, Inc. makes a living helping homeowners, interior designers, architects and contractors design the "colorscapes" of their homes and businesses.

"When traveling through a color fan deck with my customers it is interesting to explore their likes and dislikes. Truly color speaks and the language defines the canvas of one's home or business," observes color consultant Erin Kelly.

"Fear of choosing the wrong paint and stain often stops customers from exploring new color palettes. That's where I come in. It's a matter of building confidence to choose precisely the colors that nurture and nourish a client's environment. I support my customers by alleviating fears and concerns and discovering their true color personality," adds Erin. "That's my job to create a home or business painted and stained in colors which completely satisfy the customer's lifestyle."

Color your world. Go ahead try it, flaming orange, white on white, dark coffee bean stain, crisp spring green cabinets. You are only limited by your imagination, not the trends of the day. Don't be afraid, relax and take a chance. What you like and pleases your eye everyday is important. Live your life in living color and express yourself.

Contact Erin Kelly of Kelly Brothers Painting, Inc. for color consulting and design, www.Kellybrotherspainting.com 530.550.0806 for a free estimate or to schedule an appointment.

Winners of the 2012 Business of the Year Truckee Chamber of Commerce award



Truckee Waters

Surface waters within the Town of Truckee will receive additional protection from aquatic invasive species introduction as a result of Town Ordinance 2012-06. This new ordinance requires that motorized and/or trailered watercraft be inspected prior to launching in Donner Lake, as well as other water bodies within town limits. Non-motorized watercraft will be subject to inspection if identified as high risk for transport of aquatic invasive species into Truckee waters.

If established in local waters, aquatic invasive species, such as Quagga Mussels and Eurasian Water Milfoil, could degrade aquatic ecosystems, inhibit recreation, damage infrastructure and equipment and cause depreciation in property values. "The health of local waters is extremely important to the character, natural beauty and economic vitality of the Town of Truckee," said Dan Olsen, Animal Services/Code Compliance Manager. "We believe that boaters, anglers and others who recreate on Truckee waters will embrace this effort to protect this precious natural resource."

Development of Truckee's Watercraft Inspection Program is underway and will continue through early 2013. Leading the effort is a Steering Committee made up of representatives from the Town of Truckee, Truckee Donner Recreation & Park District, Truckee River Watershed Council and Tahoe Resource Conservation District. Additional input and guidance is provided by local stakeholders who serve on a Working Group. Together, the Steering Committee and Working Group aim to launch the program in May 2013.

For more information or to get involved, please contact Teresa Crimmens, Tahoe RCD at 530.587.4911 or tcrimmens@tahoercd.org

Kelly Brothers Painting INC
Celebrating 10 Years!

- interiors & exteriors
- green solutions
- artistic finishes
- custom wood finishing
- color consultation

Call today for a **FREE** estimate!
530-550-0806
KellyBrothersPainting.com
BONDED & INSURED
NV LIC #68238 • CA LIC #822843

WHAT'S BETTER THAN AWESOME?
WOODWARD TAHOE
SUMMER SNOW IN TAHOE !!!

WE PROMISE YOU WON'T MISS ANYTHING IF YOU'RE HERE!
SIGN UP BEFORE 4/1/2013 SAVE \$50

✓ SNOWBOARDING	✓ FREESKIING
✓ SKATEBOARDING	✓ BMX
✓ DIGITAL MEDIA	✓ CHEER

WOODWARDTAHOE.COM
WOODWARD TAHOE

**SEALING • REPAIRS
CRACK-SEALING**

**ROBERT E. SUTTON
COMPANY INC.**
PAVEMENT MAINTENANCE CONTRACTOR

*Over 48 years in business -
Serving Truckee since 1965*

(530) 587-4161
P.O. Box 34032 • Truckee, CA 96160



**CALL FOR A
FREE ESTIMATE** CA Lic. #510637-A




For The Protection Of Our Wildlife And Your Pets

On November 27, 2012 the Town of Truckee passed a more stringent trash law. In summary, the first offence is a warning, the second carries a \$235 fine and the third is a \$1000 fine plus the requirement to install a bear box. This is in addition to fines that may be imposed by the Glenshire Association. Under CC&R 6.07. It also states that your trash containers may not be visible except on trash day. For the protection of our wildlife, respect for your neighbors and cleanliness of your property, please put your garbage away or consider installing a bear box.

*Sierra Feed
and
The Saddlery*

IS PROUD TO CARRY
BREYER COLLECTIBLES



BREYER

775.853.6700
7460 S. Virginia Street Reno, NV

**TOWN OF TRUCKEE
FREE! YARD WASTE
DROP-OFF DAYS**

{ May 1st – June 30th }

Drop-off: up to 6 yards (42 bags) of vegetative yard waste material free at the Eastern Regional Landfill.

Proof of residence required. You must live within the Town limits to participate. Show a photo ID with physical address in Truckee or an out-of-town photo ID with utility bill.

Be prepared to unload your own yard waste. If yard waste is transported in bags, you will be required to empty the bags to take advantage of free disposal.

Multiple trips are permitted! (Limit 6 yards per household)
NOTE: There will be no in-Town (Pine Needle) drop-off days this year.
Drop off your yard waste at: Eastern Regional Landfill – 900 Cabin Creek Road (Mon-Sat: 8:00am-4:00pm).

Accepted Items:

- Pine Needles
- Pine Cones
- Lawn Trimmings
- Garden Waste
- Wood Chips & Bark
- Twigs, Limbs, & Branches
- Brush

NO: Food Waste; Pet Waste; Rocks/Dirt.

In addition, Green Bags for curbside yard waste collection continues year round. Limited to four red/green bags per week. Green bags are available at Mountain Hardware, Tahoe Supply Company and the Tahoe Donner HOA Clubhouse.

KEEPING TRUCKEE GREEN
KeepTruckeeGreen.org (530)582-2909

Find us on Facebook



Glenshire/Devonshire Residents Association

Membership Survey 2013

Please return this by March 20, 2013 to the drop box at the Glenshire Clubhouse, mail it to us or scan and e-mail to glenshire1@sbcglobal.net

General Information

1. The Association plays an important role in maintaining our property values.
Yes ___ No ___ Comment _____
2. I use or have used the current Association amenities:
Pool ___ Clubhouse ___ Tennis Courts ___ Trails ___ Playground ___
Gazebo ___ Open Space ___ Dumpster ___ Other _____
3. Would you like to see a more extensive trail system in Glenshire's open space?
Yes ___ No ___
4. How can we make the Shire more informative? _____

Amenities

1. To help delay future increases in annual assessments should a daily or annual fee be charged for pool use? Yes ___ No ___
 2. If there is a daily pool use fee should it be: \$2 ___ \$5 ___ Other _____
 3. If there is an annual pool fee should it be: \$20 ___ \$30 ___ Other _____
 4. Should a fee be charged for Tennis Court use? Yes ___ No ___
 5. Annual Tennis Court fee: \$10 ___ \$20 ___ Other amount _____
- Other ideas or comments _____

GDRA Rules and Regulations

1. Enforcement of the Association Rules and Regulations should:
Increase ___ Decrease ___ Remain the same ___
Comment _____
2. Should the scope of the inspections be increased? Yes ___ No ___
Comment _____
3. How many warnings should the Association give before legal action is initiated?
Two ___ Three ___ Four _____
4. How much time should members receive between first warning and initiation of fines? 15 days ___ 30 days ___ 45 days _____
5. Should the Association require members to re-paint or re-stain exterior sidings of homes when needed, providing a reasonable time line is provided?
Yes ___ No ___ Comment _____
6. Should parking be allowed in the front yards on non-approved surfaces?
(e.g. lawns, non paved or prepared areas) Yes ___ No ___
7. What current rule do you think needs to be enforced better? _____

Thank you for taking the time to give us your input. We want to know what you think.

Additional Comments: _____



The Shire
15726 Glenshire Drive
Truckee, CA 96161

Prst-Std
US Postage
PAID
Sierramail
96143



always something spirited

Enjoy fine steaks and classic cocktails at Atlantis Steakhouse. Discover creative cuisine complemented by a 4,000 bottle wine cellar at Bistro Napa. Both fine restaurants have won the prestigious Wine Spectator's *Award of Excellence*.

Experience eight award-winning restaurants for whatever your palate desires. And, explore a resort that expresses the ultimate in elegance and comfort.

Stay. Dine. Spa. Play. In Four Diamond luxury.

Spirited Dining Series

Expertly paired cuisine with fine wines and spirits

- | | |
|----------|---|
| March 26 | Taste of Scotland – Single Malt Scotch, Atlantis Steakhouse |
| April 25 | Trefethen, Bistro Napa |
| May 28 | Pahlmeyer, Atlantis Steakhouse |

Atlantis
CASINO RESORT SPA • RENO

Reservations 775.824.4411 | atlantiscasino.com/dining |

