

## AUGUST 2020

A large collage of 24 small photographs showing various painted rocks (Rock Art) placed in natural outdoor settings. The rocks feature diverse designs including rainbows, hearts, faces, text like "BE KIND" and "PATIENCE", and other creative illustrations. The background of the collage shows a dirt path, green grass, and a small town with mountains in the distance.





# Raley's

O·N·E MARKET

Organics • Nutrition • Education



## NO FAKE STUFF. JUST GOOD STUFF.

Discover our unique assortment of curated, wholesome products. Plus, we offer nutrition education! And check out our amazing freshly prepared food to-go, made with clean ingredients.

Shop online for pickup and delivery at  
[raleys.com/theshire](https://raleys.com/theshire) | (530) 587-0125

Visit us at Soaring Ranch located  
next to the Truckee Tahoe Airport.





# theshire contents

## in this issue

- 04 message from the president
- 06 virtual town hall
- 08 10 ways you can be a great gdra member
- 14 fireworks are illegal
- 15 life in the mountains
- 16 operations manager note
- 16 ttsd residential services
- 22 bulletin board

## features



10

### Public Safety Power Shutoffs

Liberty Utilities is working year-round to mitigate the risk of a wildfire caused by electrical infrastructure. Extreme fire conditions may warrant preemptive Public Safety Power Shutoffs (PSPS).



18

### Right Thing, Wrong Way

Whether working to create defensible space around your home, just mowing the lawn, or pulling your dirt bike over to the side of the road, if you live in a wildland area you need to use all equipment responsibly.



20

### Evacuation Plan

Truckee Police and Truckee Fire both use the Nixle public alerting system for evacuation messaging.





## MESSAGE FROM THE PRESIDENT

**Stay safe everyone, we are a strong community and we will get through these times together.**

It has been an interesting two years here in Glenshire to say the least and I am proud to have been a part of your GDRA Board and to have served as your President for the last 15 months. We have faced several challenges and as a board have worked together keeping your best interests as our primary focus. I will be taking a hiatus from serving as a board member for at least the next two years but will remain active in helping to serve the community. I have complete faith that the incoming board will continue to work to keep and to improve this wonderful community.

Since I have been on the Board we have become a Firewise Community and it is so wonderful seeing homeowners taking the time to make sure that their properties are safe with plenty of defensible space. If

there is one silver lining to the COVID-19 cloud it is how wonderful everyone's property is looking after we have all been home for so long. It seems home improvement is infectious that is one that we want to keep spreading! Be sure to let your insurance company know that you live in a Firewise Community, several give a discount for Firewise and in this day every penny saved is appreciated.

We are also nearing the end of the permit process for the dam which was put on hold by the State of California shortly after the initial application 50 years ago and revived back to active status last year. That has been a catalyst for becoming even more aggressive in improving water quality in the pond and we now have a team of professionals in the field monitoring the changes in water quality and advising us on how to make the most meaningful improvements. Please help do your part by making sure to pick up after your dogs and disposing of the waste bags properly. Also remember that activity of any kind in the pond is strongly discouraged at any time of year. Skating, fishing, swimming (by dogs and humans) is best done at other nearby waterways.

As the Board has tried its best in the face of rising operating costs to keep your dues down we have been blessed to have had volunteers step up to help improve the quality of living in Glenshire and that

is an asset that is invaluable to Glenshire as a community. It is the members of this Association that make Glenshire the best place in Truckee to live and who provide the sense of caring and community that make us unique. I urge you all to take an active part in improving the lifestyle we all enjoy. Please consider getting involved in community activities, be active in giving your voice to the Board and the Staff and lending your time and talent where you can.

Stay safe everyone, we are a strong community and we will get through these ever changing and challenging times together. Our staff is working to ensure that all facilities are compliant with the latest guidelines and when we are ready to fully reopen will implement the strictest cleaning protocols for your safety. At this time staff is still working predominantly from home so please direct any questions to them via email - glenshire1@sbcglobal.net for Lori Kelley - Operations Manager or dant.gdra@gmail.com for Dan Turner - Facilities Manager. They have worked extremely hard to keep everything running smoothly and their efforts are appreciated.

I look forward to seeing you out and about in the community.

Board President,

*Carla Embertson*



**Soak Under the Stars**

Soak under the stars while you immerse yourself in warm, clean, soothing water. Experience energizing jets or relaxing moto-massage. Relaxation and wellness are waiting for you in your own backyard. Available 365 nights a year when you own a Hot Spring Spa.

**MOUNTAIN HOME CENTER**  
FIREPLACES • SPAS • OUTDOOR COMFORTS

CUSTOM ORDERS • EXCELLENT CUSTOMER SERVICE  
Main Showroom: 11403 Brockway Road, Truckee, CA • 530.587.6681 • [www.MountainHomeCenter.com](http://www.MountainHomeCenter.com)

**HotSpring**  
Every day made better™







## Resident Article Submissions

The Shire is accepting community and resident article submissions and cover photos for future issues of The Shire. Share something important about our community! Include

photos where applicable. Photo submission guidelines: digital, high resolution JPG files. Have an idea, but not sure? Give Lori at the clubhouse office a call 530.587.6202. Submit articles & photos to peggy@cc.media. Upcoming issue - October 2020 (submit by August 15, 2020).

**Send us articles & photos to include in the next Shire Magazine! We Want to hear from you!**

## TENTATIVE Pool Opening

Beginning of August

## Community Yard Sale

Cancelled – Unfortunately 😞

## Annual Dumpster Day

Cancelled. 😞 See page 16 for alternative options.

## Board Annual Meeting

Monday, Sept. 10, 5:30pm

## Board of Directors Meetings

September 10, 6pm

October 8, 6pm

November 12, 6pm



**CAMPFIRE BAN  
EFFECTIVE JUNE 15, 2020**

**PLEASE CALL 911 TO  
REPORT CAMPFIRE!**

# TIMBERWOLFE

## TREE SERVICE

& Defensible Space Inc.  
Since 1990

# 530-386-3340

**Available to take your call 7 days a week!**

Todd Wolfe  
CCA License  
#775729

**TimberwolfeTreeService.com**

Kevin Spurgeon  
Certified Arborist  
#WE10389



Cover photo by  
Emily Rademacher  
flowphototahoe@gmail.com

The Shire is the official publication of the  
Glenshire/Devonshire  
Residents Association  
published by CCMedia  
775.327.4200  
publishing@cc.media | www.cc.media

## BOARD MEMBERS

Carla Embertson, President  
Claudia Hanson, Vice President  
Andy Anderson, Treasurer  
Kathleen Raber, Secretary  
Doug Wurzelbacher, Director at Large

## DESIGN REVIEW COMMITTEE

Ron Boehm  
Dennis Martin  
Josh Masters  
Brian McEneaney  
Tyler Ross

## GDRA STAFF

Lori Kelley, Operations Manager  
Dan Turner, Facilities Manager  
Heather Menges, Office Assistant

## CLUBHOUSE OFFICE

15726 Glenshire Drive, Truckee, CA 96161  
530.587.6202

Office staff is working remotely  
until further notice. Phone calls and emails  
are generally returned within 2 business days.

## CONTACT US

Main Office: 530.587.6202  
Pool (when open): 530.587.5519  
email: glenshire1@sbcglobal.net  
www.glenshiredevonshire.com

## BOARD OF DIRECTORS

### MEETING SCHEDULE

6pm at the Glenshire Clubhouse  
15726 Glenshire Drive  
September 10, 2020  
October 8, 2020  
November 12, 2020

## DESIGN REVIEW COMMITTEE MEETINGS

Design Review Committee (DRC) meets the  
2nd and 4th Tuesdays of the month at 7am  
(subject to change). DRC meetings will be  
canceled if no items are on the agenda 10  
days in advance of the meeting.





## VIRTUAL TOWN HALL

“If you were unable to join this live workshop, we encourage you to check it out!”

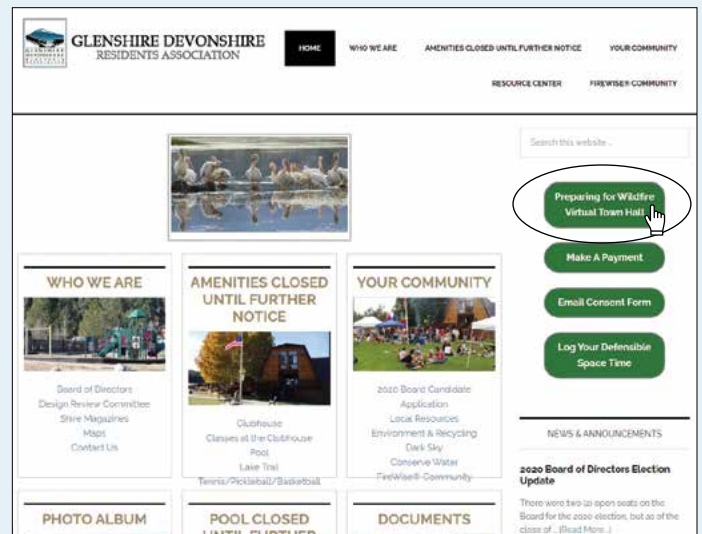
### Preparing For Wildfire In The Greater Truckee Region

The Glenshire/Devonshire Residents Association was unable to hold the annual Wildfire Preparedness Workshop this year due to covid. Therefore, a Virtual Town Hall was hosted by many fire safety officials/ experts on June 11, 2020.

This virtual Town Hall workshop will fill GDRA's 2020 workshop requirement with Firewise USA.

If you were unable to join this live workshop on June 11, 2020, we encourage you to view this workshop. There is a lot of informative content, including Q&A with audience! To view, visit [glenshiredevonshire.com](http://glenshiredevonshire.com) and click on Preparing for Wildfire Virtual Town Hall button,

Also, to help GDRA maintain Firewise status and improve wildfire preparedness outreach to our members, we are requesting that you please take a moment to email the following information to



[glenshire1@sbcglobal.net](mailto:glenshire1@sbcglobal.net) after viewing:

- Name and property address
- The most important thing(s) you learned from the workshop
- Anything you would have liked to be addressed that was not

Thank you for helping your community remain Firewise!



## DISCOVER GEAR FOR EVERY ADVENTURE

Hardware & Tools | Sporting Goods | Outdoor Apparel & More

Second Truckee Location at Soaring Ranch **NOW OPEN!**

11320 Donner Pass Rd. | 10001 Soaring Way #105 | Truckee, CA

[mountainhardwareandsports.com](https://www.mountainhardwareandsports.com)







GET \$50 OFF  
THE EARLY  
SEASON PRICE  
WITH PROMO CODE:  
**SHIRE20**

**32 RESORTS.  
NO BLACKOUTS.  
TOTALLY SHARABLE.**

BUY NOW AT  
[SKICALIFORNIA.ORG](https://www.skicalifornia.org)

The 2020-21 Ski California® Gold Pass is the ultimate and most exclusive pass to skiing, snowboarding, and cross-country skiing in California and Nevada. With just one pass, you or anyone with your pass can ski or ride at any of the 32 member resorts CA & NV have to offer.

**SKI**   
**CALIFORNIA**®  
50<sup>TH</sup> ANNIVERSARY



## 10 ways to be a great Glenshire Devonshire Member!

### 1. Maintain Defensible Space

Defensible space on every property matters toward increasing fire safety for the entire region. Find helpful information at [www.truckee-fire.org/defensible-space](http://www.truckee-fire.org/defensible-space)

### 2. Pick Up Pet Waste At All Times

Pet waste is a main polluter of the Glenshire Lake, which flows into the Truckee River. Many streams and drainages flow to the Glenshire Lake, so picking up pet waste on and off trails is important.

### 3. Use Dark Sky Exterior Lighting

Dark skies are one of the reasons many of us live in the mountains and not a city. Town of Truckee and Glenshire have Dark Sky ordinances. Studies have shown that bright lights are harmful to wildlife, affecting feeding, mating and more. Visit [www.darksky.org](http://www.darksky.org) for more information.

### 4. Keep Control of Pets

Pets chasing wildlife can be very detrimental, especially during nesting and fawning seasons. Keep dogs from roaming and respect use of leashes for their safety and the safety of others. We request dogs not go on the Glenshire Lake island.

### 5. No RV Living

Pursuant to GDRA rules and regulations.

### 6. Contact GDRA Office For Exterior Improvement Approvals

Most exterior improvements require GDRA approval, including but not limited to: Painting / Windows / Sheds / Fences / Additions / Parking Areas / Tree Removal. Some improvements require a Design Review Committee approval, others staff approval

### 7. Responsible Use of Dumpsters, Bins and Carts

Please contact GDRA staff if you need to use the clubhouse dumpster. Please don't put household trash in the clubhouse bear bins or over the dumpster gate. Please don't overfill seasonal dumpsters: Christmas tree, cardboard, green waste. Please help protect wildlife and store recycle carts in an enclosed area until morning of pick up.

### 8. Respect Your Neighborhood

Respect construction hours: Mon - Fri 7am - 8pm / Sat, Sun & Federal Holidays 9am 7pm. Restrict Noise pollution: loud music, machinery, barking dogs, etc.

### 9. Help Keep Your Neighborhood Safe

Do not use Fireworks, Bottle Rockets, etc. They are dangerous, not allowed and against the law. Please respect the speed limits and bike lanes.

### 10. Help Your Community by Volunteering

Lake, Trails, Neighborhood Defensible Space Days and more. Contact GDRA staff to find out how [glenshire1@sbcglobal.net](mailto:glenshire1@sbcglobal.net)

## Trash day is a bear's buffet.



Bears will eat your garbage.  
Lock it down with bear-proof bins.  
[takecaretahoe.org](http://takecaretahoe.org)

**Take  
care.**





# IMMEDIATE (NONCOMBUSTIBLE) ZONE

Why is it important to create and maintain 5 feet of noncombustible space around the exterior of a building?

Wildfire risks are on the rise, but there are ways home and business owners can take control of their vulnerabilities. Changes made to a structure and its surroundings within 100 feet can make a big impact. Research from the Insurance Institute for Business and Home Safety (IBHS) shows that the first 0 to 5 feet around the structure, known as the immediate zone or noncombustible zone, has the greatest impact on your risk. IBHS and the National Fire Protection Association® (NFPA®) recommend keeping this zone well-maintained and clear of combustible materials.

## IBHS Research

The main objective of the 0-to-5-foot zone is to reduce the potential that embers landing near a building will ignite fuels and expose the area around a home to a direct flame (Figure 1). Removing anything that can ignite from embers is critically important. To verify how effective a 5-foot noncombustible zone is around a building, more than 180 tests were conducted in 2018 at the IBHS Research Center to evaluate fire behavior and heating of buildings (Figures 2a & 2b).

## Key Observations

- For combustible landscaping, such as wood mulch, the thickness of the mulch bed, wind speed, and location of the flame and building all impact the potential of mulch to ignite and how quickly fire can spread to the building.
- Burning mulch generates embers that can ignite nearby mulch, increasing the chances of direct flame contact spreading to the building.
- When flames are 5 feet away, a building's surface temperature is below temperatures that could cause ignition. However, corners of a building (45-degree angles) experience a higher temperature when exposed to flames, even when a 5-foot space is present. Testing showed that corners can be more vulnerable due to fire spread through fuel (such as mulch) on the ground, because at the same wind speed, wind blowing directly at a wall (90-degree angle) will result in taller flames and more radiant heat, while wind on a corner (45-degree angle) will result in longer flames that are closer to the ground.

## Recommendations

- Keep the corner areas of a building clear of combustible materials due to the higher probability of having direct flame touching the surrounding ground.
- Keep gutters free of debris and use metal gutters.
- Install hard surfaces, such as a concrete walkway, or use noncombustible mulch products, such as rock.
- Keep the lawn well irrigated and use low-growing herbaceous (non-woody) plants. Shrubs and trees are not recommended in the 5-foot zone.
- Remove dead vegetation and implement a maintenance strategy to keep the 5-foot zone clear of dead plant materials.
- Mitigating home ignition zones shouldn't stop at 5 feet from the building. It should be combined with the footprint of an attached deck and area that extends away from the building up to 100 feet or to the property line.



**Figure 1** – Creating and maintaining home ignition zones (defensible space) around your property are proven ways to reduce risks of property damage during a wildfire, as tests at the IBHS Research Center have shown.



**Figure 2a** Experiments conducted at the IBHS Research Center to study the effectiveness of creating a noncombustible space around buildings.



**Figure 2b** Embers impacting a building: left side with combustible (wood) and the right with noncombustible (rock) mulch.

© Insurance Institute for Business & Home Safety

## Learn More

- ▶ For online training and other resources, see [nfpa.org/firewise](https://nfpa.org/firewise).
- ▶ Access the latest research from IBHS at [ibhs.org](https://ibhs.org).



**FIREWISE USA®**  
RESIDENTS REDUCING WILDFIRE RISKS







# POWER SHUTOFF

Liberty Utilities is working year-round to mitigate the risk of a wildfire caused by electrical infrastructure. While we are making great strides addressing the safety and reliability of our grid, extreme fire conditions may still warrant preemptive de-energization measures, also referred to as a Public Safety Power Shutoff (PSPS). Therefore, planning for and knowing what

to expect from a PSPS should be part of your wildfire protection and preparedness efforts.

## What Constitutes Extreme Fire Weather?

A PSPS is reserved for times when fire weather conditions are at their most extreme and de-energizing a portion of the electrical grid is the prudent decision to best protect our customers, communities, and the environment.

Many of the same factors that are used by Fire Agencies to determine a Red Flag warning are also considered when determining if weather conditions warrant a PSPS. Liberty Utilities has deployed weather stations throughout the service area, collaborates with a fire and weather scientific consultant, with the National Weather Service in Reno, Nevada, and with local fire officials to monitor real time local weather conditions to evaluate if and when a PSPS is required to limit wildfire risk.

No single factor will drive a PSPS, as it takes a combination of factors reaching or exceeding a set limit to initiate a PSPS. Some of these factors include:

- Low Humidity Levels – Potential fuels are more likely to ignite when there is a lower amount of water vapor in the air.

*Continued on page 12*

# *Your* Health is *our* Number One Priority

**Our Hospitals, Clinics & Outpatient Services are OPEN + SAFE**

**Schedule *today!***  
**(530) 582-6205 | [tfhd.com](https://tfhd.com)**

A heart-shaped logo with a stylized mountain and trees inside.

**TAHOE FOREST HEALTH SYSTEM**







# KEEP ME WILD™

## Stash Your Food and Trash

**Black bears, coyotes and other wildlife may be your neighbors here.**

- Store garbage in bear-proof containers
- Or store garbage in your garage until pick-up
- Keep food indoors or in airtight and odor-free containers
- Put away picnic leftovers; clean BBQ grills
- Keep pet food and bird feeders away
- Pick up fallen tree fruit
- Remove cosmetic fragrances and other attractants
- Install or request bear-proof trash containers

**Feeding bears is dead wrong.  
It's also against the law.**

Allowing wild animals access to human food and garbage can be deadly. Wild animals naturally fear people, keep a distance, and will not bother you, so long as they remain truly wild. But if they have access to human food and garbage, they want more. Their natural ways are ruined. Their normal wildness and fear of humans is lost. That's when conflicts occur.

**Keep them wild.**

If in doubt about what to do, ask your local Fish and Game warden, park ranger, law enforcement officer, garbage collection company, or town council. Or visit our website:

[www.keeptomewild.org](http://www.keeptomewild.org)



A campaign supported by the  
California Department of Fish and Game



- **Forecast Sustained Winds & Gusts** – High winds can result in several factors that may cause a fire to ignite. Sustained winds can also cause the fire to spread and even throw embers into the air and create additional fires.
- **Dry Fuel Conditions** – Trees and other vegetation act as fuel for wildfires. Fuels with low moisture levels ignite easily and spread rapidly as no heat energy is wasted trying to drive water out of the fuel.
- **Red Flag Warnings** – Issued by the National Weather Service to alert of the onset, or possible onset, of critical weather or dry conditions that would lead to swift increases in wildfire activity.

## How Will We Know if a PSPS is Activated?

Advance notification is critical in any PSPS scenario and Liberty will alert customers, public safety partners, and others at the earliest opportunity. When possible, Liberty will directly notify customers of a PSPS approximately 48 hours before power is shut off, 24 hours before power is shut off, just before power is shut off, during the PSPS and once power has safely been restored. Direct notification is the best, most effective way to keep customers apprised of a PSPS event. We strongly encourage every customer to call Liberty at 1.800.782.2506 to confirm their contact information is up to date. If you have a loved one with access and functional needs, help them update their contact information and consider adding yourself as a secondary contact.

In addition to direct PSPS notifications and updates, Liberty Utilities will post detailed outage information at [www.libertyutilities.com](http://www.libertyutilities.com), as well as on Facebook (@LibertyUtilitiesLT) and Twitter (@LibertyUtil\_CA).

Knowing if a PSPS event is coming, how long it will last, and who it will affect is an important first step in being prepared for, and in staying safe and comfortable should a PSPS event occur.

How do I Prepare?

Once you have ensured your contact information is up to date, PSPS preparation is not much different than any power outage preparation. Customers should consider the following to ensure their homes, businesses and families are prepared:

- Plan for medical needs that may be impacted by a power shutoff, including medications that need refrigeration or devices that require power. Be sure to register any medical-related energy needs at 1.800.782.2506.
- Create an emergency kit including flashlights, batteries, first aid supplies and maps of the local area. For additional emergency kit necessities, consult Ready.gov.

- Store non-perishable foods and water to support your family and pets for a minimum of 48 hours.
- Keep a full tank of gas in your vehicle as gas stations may be affected by a power outage
- Keep cash available as ATMs and credit card machines may be unavailable during a power outage.
- Be sure phones and other critical electronic devices are charged and consider investing in a backup battery or power source, potentially one that can recharge with solar.

Liberty Utilities' top priority is the safety of customers and our communities, and we will take every precaution to keep our beautiful region safe from the risk of wildfire. To learn more about our wildfire mitigation programs, customers are encouraged to call 1.800.782.2506 or visit [www.LibertyUtilities.com](http://www.LibertyUtilities.com).



*Article written by Lee Kiolbasa  
Emergency manager, Liberty Utilities*



### **Liberty Utilities' customers are reducing our state's carbon footprint one step at a time.**

All residential customers receive a climate credit twice a year on their bill, and eligible small business customers receive this credit on their monthly statements.

#### **What does this mean to you?**

It means real savings you can use to make energy efficient changes to your home or business —  
AND a cleaner planet for all of us.

**Local and Responsive. We Care.**



**Liberty Utilities®**

[www.libertyutilities.com](http://www.libertyutilities.com)





# GOING GREEN TO KEEP OUR REGION BLUE.

We live in a special place. As a deeply committed community partner, the Truckee Tahoe Airport District cares about our environment and we work diligently to minimize the airport's impact on the region. From new ADS-B technology, to using electric vehicles on the airfield, and preserving more than 1,600 acres of open space land, the District will continue to seek the most sustainable way of operating.



Photo by Anders Clark, Disciples of Flight



## Green Initiatives

Over the past five years, we've developed a number of initiatives that reduce our dependence on fossil fuels and keep our community clean and blue.

- New flight tracking program (ADS-B) allows for more efficient flying
- Open-space land acquisitions for public use
- Energy-efficient hangar lighting
- Electric vehicles & E-bikes used on field
- Land management plan for forest health and wildfire prevention
- Implementation of Greenhouse Gas Inventory & GHG Emission Reduction Plan



## FIREWORKS NOT ALLOWED

Fireworks start an average of 18,500 fires per year, including 1,300 structure fires, 300 vehicle fires and 16,900 wild fires!

### Fireworks And Bottle Rockets Are Illegal

Per the NFPA, Fireworks start an average of 18,500 fires per year, including 1,300 structure fires, 300 vehicle fires, and 16,900 wildland fires. In 2018, these fires caused an average of three deaths, 40 civilian injuries, and an average of \$43 million in direct property damage.

All fireworks are banned in Nevada and Placer County, except permitted public display fireworks that are issued a permit by

## FIREWORKS ARE ILLEGAL and cause wildfires

Report to  
**530-550-2320**

Business vector created by dooder - www.freepik.com



the local fire administration, authority having jurisdiction (TFPD). Town of Truckee Ordinance 2015-05 amending the municipal code Chapter 9 - section 9.15.050 prohibits fireworks within the town limits, except for permitted public display fireworks that are permitted by TFPD. This ban includes Safe & Sane fireworks.

Residents can report illegal fireworks by calling the **Nevada County Sheriff Non-emergency Dispatch Line 530.550.2320**. Truckee Police Department will be the responding unit within the town limits. **The penalty for possession and use per the municipal code is a misdemeanor that could result in a fine or even jail time.**



**ORGANIC GROCERIES  
DELI  
BEER & WINE**

**YOUR LOCAL GROCERY STORE**  
**530.587.1819**  
10095 Dorchester Drive | Truckee, California



**BASSETT FLOORING**  
is family owned and operated and  
has served the Truckee-Lake Tahoe  
area since 1979.

We carry high-quality hardwood  
flooring and carpet ideal for your  
mountain home. Visit us and explore  
our amazing selection at the Pioneer  
Commerce Center in Truckee.

*Bassett Flooring's*  
**Abbey Carpet**  
*of Truckee-Lake Tahoe*

10800 Pioneer Trail, Unit 3, Truckee  
**530 582.7428**  
[bassettflooring.com](http://bassettflooring.com)





# LIFE IN THE MOUNTAINS

## BE PREPARED

By Jennifer Bloomfield

Living in the mountains has taught us to be prepared for anything. My kids know to keep a flashlight in the glove compartment, pack an extra pair of socks, and have at least one non-immediate family member's phone number memorized. When I helped a customer load flowers into the back of her car we had to move her container of extra gloves and scarves to make room. She said she thought about taking her boots out. Whether we are going camping, soccer or the lake we all have stuff we routinely bring with us. We know we may wear our puffy jackets that evening over our t-shirts. We definitely need chairs, a blanket, toys, snacks and something to drink. Our environment is rugged. It is unpredictable. We live with road closures, blizzards, and wildland fires. Our East Coast family cannot imagine it.

In this unprecedented age of uncertainty it can be overwhelming to just get through the day. There is an abundance of resources out there with checkoff lists. It seems like every corner of the internet has a different suggestion for how to prepare for the worst. Whether you call it pessimism or realism, either way it becomes exhausting to constantly think about. So I have found it helpful to incorporate fire safety and disaster preparation as part of my routine instead of a reaction to an extreme.

I am setting aside cash each week. If the power and internet are down our debit cards will not work.

I have made an appointment with our veterinarian to have our cat vaccinated and microchipped. I will ask for a copy of his medical records and keep them with my other important papers. I have photos of him on my phone.

My kids are living at home right now. My son has been assigned the clearing of our defensible space. Of course he is logging his hours onto the Glenshire Devonshire website to help our community maintain Firewise designation! My daughter has been given the project of creating an inventory of everything in the house. Fortunately she can do this with her cell phone.

When I receive a Nixle alert saying it is a red flag day I make certain that the car is full of gas and backed up the driveway for easy departure. The go-bags are by the door. One of my friends always texts me to make sure we are ok.

Our family has always let each other know where we are. I started doing it with the kids when they were little, worried that they would be buried in a snowbank.

I keep my cell phone charging when I am not using it. I do that with my laptop. I'm going to buy a portable charger.

I have a book and a knitting project in my go-bag. I feel safer with this habitual preparation, even if it is just for my own peace of mind. We can be ready for anything Glenshire!



### Be Informed, Stay Informed Sign Up Today

Nixle keeps you up-to-date with relevant information from your local public safety departments.

Nixle has introduced **SmartPath**, which automatically prioritizes emergency messages and helps manage the potential clutter of non-emergency updates and reminders.

#### 3 Easy Ways To Receive Notifications:

- text your zip code to 888-777
- Download the mobile app to your phone
- Visit [www.Nixle.com](http://www.Nixle.com) and register

A vertical advertisement for Tahoe Donner Bike Works. The background is a photograph of a mountain biker in a blue shirt and black shorts riding a trail bike on a dirt path through a forest. In the upper left corner of the photo is the Tahoe Donner logo, which consists of a white triangle containing a stylized snowflake and the words "TAHOE DONNER". Overlaid on the right side of the photo is the text "START YOUR ADVENTURE AT BIKEWORKS" in large, bold, white capital letters, followed by "OPEN DAILY 9AM-6PM" in smaller white capital letters. Below this, there are four sections with green headers: "ACCESS" (Hit the Trails Right from the Shop), "RENTALS" (Industry-Leading Mountain Bikes Giant Trance + Liv Intrigue Road Bikes • Comfort Bikes • Kids Bikes + Trailers), "LESSONS" (Private Lessons + Guided Rides for All Levels), and "SHOP" (Quickest Bike Repairs in the Area Best Brands for Gear + Accessories). At the bottom of the ad, on a solid green background, is the text "AT ALDER CREEK ADVENTURE CENTER 15275 ALDER CREEK ROAD, TRUCKEE" and the website "TAHOEDONNER.COM/BIKEWORKS" in white capital letters.



## OPERATIONS MANAGER

Thank you  
for spreading  
rainbows,  
rocks & other  
kind gestures  
throughout our  
community!

### Thanks for your patience!

In the midst of these unique times, GDRA staff is trying our best to accommodate our Members, while at the same time remain within state and county guidelines. We realize there is some disappointment due to the unforeseen postponement and cancellation of events and amenities. We hope the four Green Waste days at the rodeo grounds served as a good alternative to our one half-day event. I would like to share Truckee Tahoe Sierra Disposal residential services that may help serve as alternatives to our now cancelled dumpster day. Please see the TTSD info to the right. And, as of the time of writing this article, pool staff is still working hard on routine maintenance and

the implementation of many new systems and trainings to help ensure everyone's safety. All in hopes of opening the pool in the beginning of August, of course, with limited capacity and no guarantees.

Staff will continue efforts to respond to all calls and emails within two business days. However, due to the additional work load and leaner staff, we are not always able to handle things as promptly as we would like to. So please check back in if you don't hear from us. We are very appreciative of the patience and understanding we have been receiving from Members! And thank you for spreading the rainbows, rocks and other kind gestures throughout our Community! I'm sure they've been uplifting the spirits of many; what an amazing Community! One of the good things to hold onto during all of this!

**If you aren't already on our E-List, now is the time to join so you can stay tuned in on important information during these times.**

Visit [www.glenshiredevonshire.com](http://www.glenshiredevonshire.com) and click on E-Consent Form.

Thank you!

Lori Kelley, GDRA Operations,



### Special Residential Services For Truckee Residents

- If you have more than your regular household trash to be picked up, e.g. yard clean up or appliances, you need to call our office at 530.583.7800 and give authorization to pick up these additional items.
- Truckee residents have the opportunity to schedule four free trash overages per year. Customers must schedule the overage via the online portal in advance of their pick-up day to schedule an overage and may then put out up to 3 extra cans or bags (51lb max limit each) of additional waste on their normal service day.
- 2 free bulky item pick-ups each year to include household furniture and e-waste. Must be under 200 lbs. Residents must call TTSD in advance to schedule a bulky item pick-up.
- We recommend you purchase a bear shed. TTSD clean-up efforts for garbage mess will incur a charge.

For more info, including local bear shed vendors, visit <http://www.waste101.com/residential-services/>

For *all* your needs, we're here for *you*.



#### Primary & Specialty Care

Visit a primary care doctor or clinic for routine care, vaccinations, and screenings, as well as minor infections, allergies, illness, or injuries.

**By Appointment: (530) 582-6205**

- Truckee
- Tahoe City
- Incline Village



#### Urgent Care Clinic

Visit the urgent care clinic with an injury or illness that is not life threatening but requires treatment within 24 hours.

**Walk-in & By Appointment: (530) 581-8864**

- Truckee
- Tahoe City
- Squaw Valley (during ski season)

Open 7 days a week, including some holidays



#### Emergency Room

Go to an Emergency Room immediately if you experience a life threatening injury or illness, including fever in a newborn less than 3 months old.

**Tahoe Forest Hospital**  
(530) 587-6011

**Incline Village Community Hospital**  
(775) 833-4100

Most insurance plans accepted. Patients without insurance should be prepared to pay with cash or credit card.

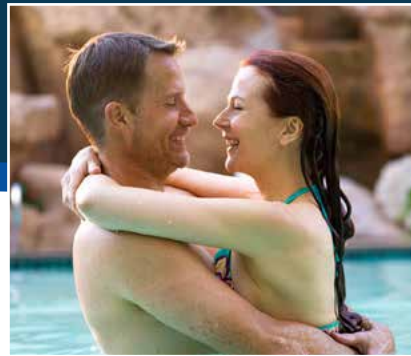
[tfhd.com](http://tfhd.com)



TAHOE FOREST  
HEALTH SYSTEM







# #1 RESORT | 5 YEARS STRAIGHT on tripadvisor®

We're ready to make your getaway unforgettable. Book with  
TripAdvisor's #1 Resort, 5 years straight, Atlantis Reno.  
Your stay with us is safe and comfortable. Come out on top  
when it comes to dining and gaming. Plan your stay with us today!

**Atlantis**  
CASINO RESORT SPA • RENO

[atlantiscasino.com](http://atlantiscasino.com)





## Here's how to do it the right way.

### Mowing

**Mow before 10am, but never when it's windy or excessively dry.**

Lawn mowers are designed to mow lawns, not weeds or dry grass. Metal blades striking rocks can create sparks and start fires. Use caution.

### Spark Arresters

In wildland areas, spark arresters are required on all portable gasoline-powered equipment. This includes tractors, harvesters, chainsaws, weed-eaters and mowers.

- Keep the exhaust system, spark arresters and mower in proper working order and free of carbon buildup.
- Use the recommended grade of fuel and don't top it off.

### Equipment Use

In wildland areas, grinding and welding operations require a permit and 10 feet of clearance. Keep a shovel and a fire extinguisher ready to use.

- Don't drive your vehicle onto dry grass or brush. Hot exhaust pipes and mufflers can start fires that you won't even see - until it's too late!
- Keep a cell phone nearby and call 911 immediately in case of fire.



# RIGHT THING, WRONG WAY.

Whether working to create defensible space around your home, just mowing the lawn, or pulling your dirt bike over to the side of the road, if you live in a wildland area you need to use all equipment responsibly. Lawn mowers, weed-eaters, chain saws, grinders, welders, tractors, and trimmers can all spark a wildland fire. Do your part, the right way, to keep your community fire safe.

**NOTE FROM GDRA: PLEASE KEEP DRY GRASSES 4 INCHES OR UNDER IN HEIGHT. PLEASE USE WEED EATERS AND ALL GAS EQUIPMENT BEFORE 10AM.**

## HIGHEST *Quality* CANCER CARE

**Leading the way in rural cancer treatment through highly-skilled, compassionate care**

*The very latest technology, the most current treatment options, and extensive support programs, offering a whole-person approach.*



Offering Varian TrueBeam



GENE UPSHAW MEMORIAL  
TAHOE FOREST CANCER CENTER

10121 Pine Avenue  
Truckee, CA  
(530) 582-6450  
[tahoecancercenter.com](http://tahoecancercenter.com)







Elevate  
your life.



Koch Elevator has several **residential products**, making it easy to purchase the best products that will meet your needs:

HOME ELEVATORS

DUMBWAITERS

STAIR CHAIRS

WHEELCHAIR LIFTS (INSIDE OR OUTSIDE)

**Local Family-Owned  
Since 2001**

**Cell: 775.247.8820**

*Authorized dealers for  
Inclinator of America, Savaria,  
Thyssenkrupp Access, Waupaca,  
Matot, Canton and Harmar.*

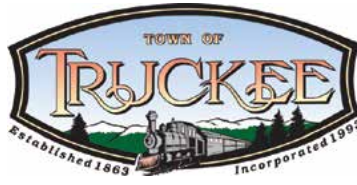
Off: 775.323-8822  
[nick@kochelevator.com](mailto:nick@kochelevator.com)

**KOCH  
ELEVATOR**

CA LIC 927006 NV LIC 054884

924 Incline Way, Suite C, Incline Village, NV  
561 Sunshine Lane, Reno, NV

# EVACUATION PLAN



In an emergency, public safety officials will use multiple messaging tools to communicate information and instructions to the community. Know what messaging tools your community uses and sign-up for alerts before an emergency occurs!

Truckee Police and Truckee Fire both use the Nixle public alerting system for evacuation messaging. They can send text and emails directly to your wireless device or email account during an emergency. Nixle can also send voice alerts to landlines and messages to TTY/TDD systems. To sign-up for Nixle please visit <https://local.nixle.com/regsiter/>

## Before An Evacuation

- Have a plan of how you will leave and where you will go.
- Develop a family communication and reunification plan.
- Have a go bag with 3 days of clothing, medications, phone numbers, and important paperwork.
- If you have a vehicle, make sure the fuel tank is full.
- If you don't have a vehicle, have a plan on how you will leave.

## During An Evacuation

- Leave as soon as an evacuation is recommended.
- Don't wait to be ordered to leave.
- Locate your pets and take them with you.
- Tune to AM radio stations or advisory radio 1670AM for the latest information.
- Have an evacuation route plan.

## Additional Sources Of Information

- **Broadcast Radio** 780AM KOH, 88.7FM KUNR, 101.5FM KTKE
- **Television:** Both Reno and Sacramento stations (cable and satellite) carry emergency alerts.



- **NOAA Weather Radio:** NOAA Weather Radio broadcasts emergency weather alerts and other events. During an emergency, the weather service forecasters send a special tone to activate weather radios. Learn more at NOAA Weather Radio.
- **Social Media:** Trusted social media partners such as government accounts often provide good sources of information.

## Resources

### Nevada County Office of Emergency Services

CodeRed for alerts: <https://public.coderedweb.com/CNE/en-US/CA8B57E20D17>

### Placer County Office of Emergency Services

Everbridge for alerts: <https://local.nixle.com/register>

### Ready,Set,Go – Wildfire Is Coming

<http://www.readyforwildfire.org/Pre-evacuation-preparation/>

<http://www.readyforwildfire.org/Go-evacuation-guide/>

### Truckee Office of Emergency Services

10183 Truckee Airport Rd. Truckee, CA 96161 530.550.2323

<http://www.townoftruckee.com/government/police/emergency-services>

## Wildfire SEASON IS HERE. ARE YOU PREPARED?



Does Truckee Donner PUD have your **up-to-date customer contact information** in case of an emergency?

**Be safe, take action:**

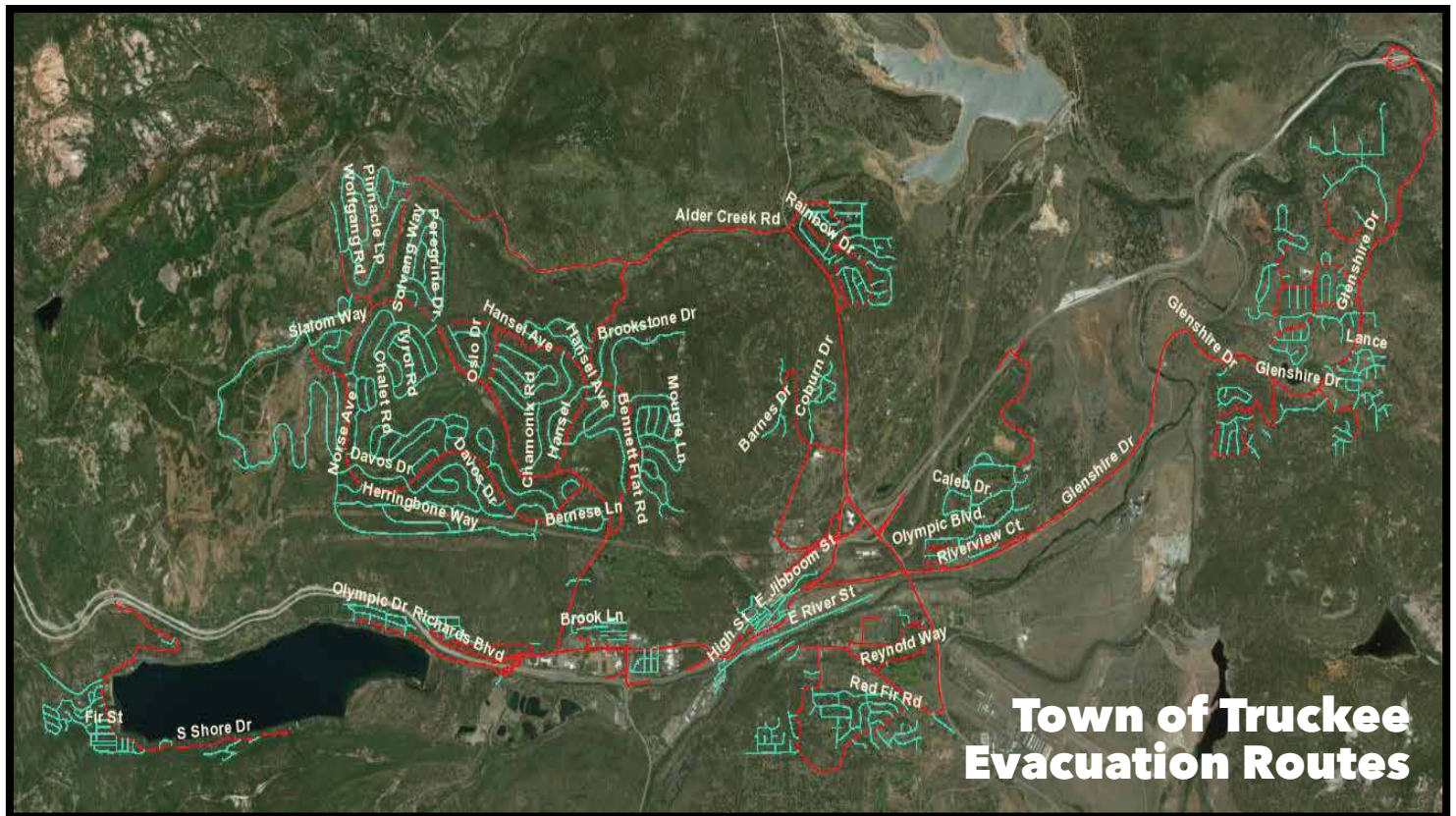
- Visit **tdpud.org** and click on the **My Account** button to update your contact information and sign up for alerts and notifications.
- Visit **tdpud.org/wildfire-safety** for information and links to resources.

**TRUCKEE DONNER  
PUBLIC UTILITY DISTRICT**

**(530) 587-3896 | [tdpud.org](http://tdpud.org) | Follow us!**  







Be prepared for evacuation before the incident occurs. Notification systems are not perfect and are not guaranteed to work in an emergency. **Evacuate if you think you are in danger!**



Every legend begins somewhere. Now yours can begin in the biggest BMW ever built—the BMW X7. It's right at the intersection of luxury, comfort and performance. The X7 has three rows of seats, with the option to seat six or seven. You can even customize the interior trim, gearshift controls and lighting. With all the latest safety features and hands-free assistance, you have more control than ever. And with one look through the panoramic glass roof, it's clear—this level of luxury takes you places.

Contact a Client Advisor at **Bill Pearce BMW** to take a test-drive today. Special lease and finance offers available by **Bill Pearce BMW** through BMW Financial Services

**Bill Pearce BMW**  
11555 S. Virginia Street  
Reno, NV 89511  
(775) 826-2100  
billpearcebmw.com

Exclusively distributed by BMW of North America, LLC ©2019 BMW of North America, LLC. The BMW name, model names and logo are registered trademarks.



## BULLETIN BOARD

**Truckee Police & Truckee Fire both use Nixle public alerting system for emergency messaging. Sign up today! <http://local.nixle.com/register/>**

## Remember To Log Defensible Space Hours

GDRA needs all Residents to log in Defensible Space hours performed on their property! Click on "Log Your Defensible Space Time" button at [glenshired Devonshire.com](http://glenshired Devonshire.com). Help your Association remain a Firewise Community! Visit [glenshired Devonshire.com](http://glenshired Devonshire.com) to log your hours. Contact GDRA office with any questions. When an entire community gathers together to make the neighborhood a better place, everyone benefits! Thank you!

## Yoga In Glenshire

**Classes are postponed until further notice.** Drop-in (\$12) or punch card (\$50/5-pack) available. Contact Amy Renn of Terra Firma Fitness, Massage & Yoga at [amytterrafirma@gmail.com](mailto:amytterrafirma@gmail.com), or 209.662.4146 for more information.

## Non-profit Event Information Welcome

If you are involved with a Truckee non-profit holding an event you would like your neighbors to know about, please submit to Glenshire Assoc at [glenshire1@sbcglobal.net](mailto:glenshire1@sbcglobal.net) and we will publish brief information (no ads) in the appropriate Shire. Submit By: August 23, 2020 for October 2020 Edition.

## Lake Trail Fundraising Campaign

Thank you to those who have donated funds toward the lake trail! To make a donation, mail to: Glenshire Lake Trail Project, in care of the Truckee Tahoe Community Foundation, P.O. Box 366, Truckee, CA 96161 or visit [glenshired Devonshire.com](http://glenshired Devonshire.com) to donate online. Many upgrades and drainage revisions are being planned. Contact the GDRA offices to be on the Lake Trail Committee.

## SOS Glenshire

Have a voice regarding the future of Eastern Truckee! SOS Glenshire (Saving Open Space around Glenshire) is working to ensure that our voice is heard in the Town of Truckee General Plan Update, and in developments like Canyon Springs. At this time, it is important to keep informed- **Please sign up for updates through our e-newsletter at [sosglenshire.org](http://sosglenshire.org)**

**RENTAL MAILBOXES  
NOW AVAILABLE  
TRUCKEE AIRPORT LOCATION**

**TheOfficeBOSS.**  
MAIL CENTER  
Getting Your To-Do List DONE!



Two Locations in Truckee: Next Door to Safeway and around the corner from Raley's (Truckee Airport)

**530-587-1620**

[www.TheOfficeBOSS.com](http://www.TheOfficeBOSS.com)

**YOUR LOCAL  
GENERATOR EXPERT  
IMMEDIATE INSTALLATION AVAILABLE**



**VERDI ENERGY**

**775-391-3111**

**SAVANT LUTRON GENERAC**

Authorized Dealer / Installer

VERDI ENERGY, INC | CA LICENSE #1014888 NV LICENSE #0081880





## Sign-up For Nixle

Nixle is a communication tool utilized by the Truckee Police Department and Truckee & Northstar Fire Departments to provide important communications to the community through email and text messages. Signing up is fast, easy and free. For more info visit to [www.nixle.com](http://www.nixle.com) and sign up today.

## [glenshiredevonshire.com](http://glenshiredevonshire.com)

Visit our website for links to fire safety info, the latest road conditions & local road web cams, Glenshire Drive road construction, Board meeting highlights and more...

## Playdate Preschool & School Age Program

We will be launching our summer program this year with a unique, creative, and fun design for our families and kiddos that also minimizes all-risk. I love and care about this community and want to do everything I can to make sure these kids can remain kids. If you would like to know more about either of these programs, feel free to contact Teacher Tyler at 530.582.0441 or [PlayDateGlenshire@gmail.com](mailto:PlayDateGlenshire@gmail.com)

## Clubhouse Dumpster

Please do not dump your personal trash without permission. Please call and ask if we have room. We don't mind helping, but please ask first! (Wednesdays preferred) Please schedule 24 hrs in advance.

## Two Line Dance Classes!

**Classes are postponed until further notice.** Two Line Dance Classes - Most Tuesdays - Glenshire Clubhouse

### 6:05-7:05pm - Beginning Line Dance

Anyone over 12 years of age interested in line dancing. No special shoes, clothing or dance experience needed. We are currently working on line dance steps (to music). Come and join in the fun!

### 7:05-8:15pm - High Beginner/Improver Line Dance

Anyone over 12 years of age who has, in essence, graduated from a Beginning Line Dance Class or who has had previous structured dance experience (ballet, jazz, contemporary, line dance or ballroom dance) and/or picks up dance steps easily.

\$8 per person. Contact Robin Reese at [rbtahoe@sbcglobal.net](mailto:rbtahoe@sbcglobal.net)

## Glenshire Lake

Recreational activities in or on the lake, such as swimming, ice-skating or other similar activities, are not endorsed or recommended by the Association. The Association assumes no responsibility for any such use. Please enjoy the beauty, don't litter, control and pick up after your pets.

## We Love Facebook

Facebook is the easiest and fastest way to get the latest important information to you by reposting Truckee Tahoe Road Conditions, Truckee CHP, and the Town of Truckee messages.

**SPECIALIZED CARE  
WHERE YOU NEED IT**

**Concussion Management**  
**Elbow**  
**Foot & Ankle**  
**Hand & Wrist**  
**Hip**  
**Joint Replacement & Revision**  
**Knee**  
**Orthopedic Trauma**  
**Pediatric Orthopedics**  
**Shoulder**  
**Sports Medicine**

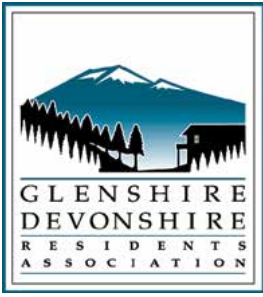


**TAHOE FOREST  
ORTHOPEDICS &  
SPORTS MEDICINE**

*Exceptional Care Begins Here*

**(530) 213-0225 | [www.tahoeorthopedicsandsports.com](http://www.tahoeorthopedicsandsports.com)**





The Shire  
15726 Glenshire Drive  
Truckee, CA 96161

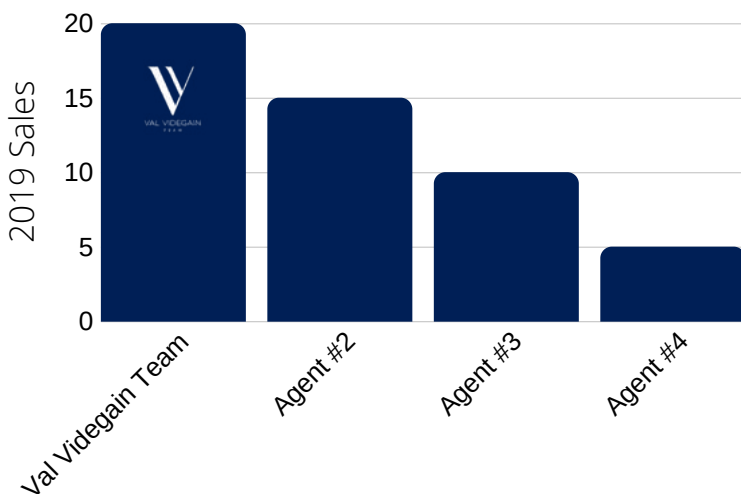


# LOVE WHERE YOU LIVE

## Your Glenshire Listing & Sales Specialists

FIRST RATE MARKET KNOWLEDGE | HONEST ADVISE | STRAIGHT FORWARD COMMUNICATION

### Leading the Glenshire Market!



Val Videgain Team | Coldwell Banker Lake Tahoe Region  
valvidegain.com | CALBRE #01494833, CALBRE #01240170  
17400 Northwoods Blvd. Truckee, CA 96161  
530.582.2400 Office | 530.412.1671 Cell